



MASON INDUSTRIES, Inc.

Manufacturers of Vibration Control Products

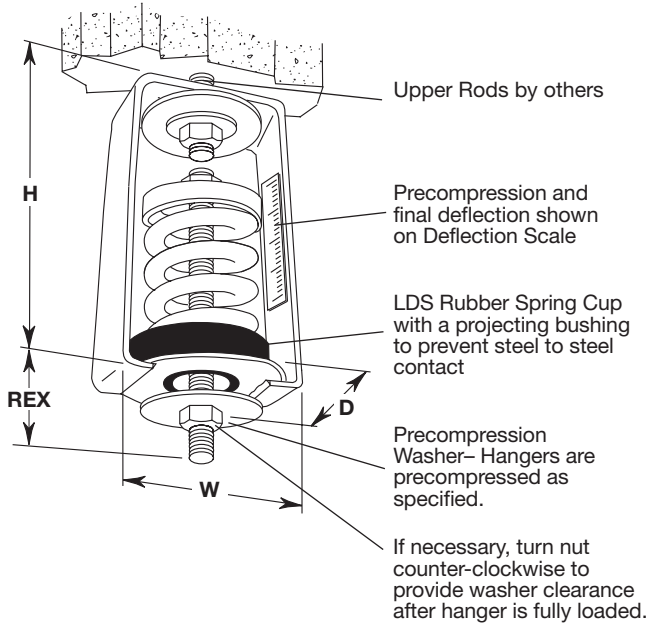
350 Rabro Drive
Hauppauge, NY 11788
631/348-0282
FAX 631/348-0279
Info@Mason-Ind.com

2101 W. Crescent Ave., Suite D
Anaheim, CA 92801
714/535-2727
FAX 714/535-5738
Info@MasonAnaheim.com
www.Mason-Ind.com

JOB NAME _____
CUSTOMER _____
CUSTOMER P.O. _____
MASON M. _____
DWG No. _____

PCHS

1" 25mm Deflection
X & A Series
Precompressed
Spring Hangers



TYPE PCHS RATINGS

Type and Size	Rated Capacity (lbs) (kg)		Rated Deflection (in) (mm)		Spring Constant (lbs/in) (kg/mm)		Spring Color
PCHS-X-23	23	10	1.50	33	18	0.3	Brown
PCHS-X-33	33	15	1.30	28	30	0.5	Red
PCHS-X-54	54	24	1.40	31	45	0.8	White
PCHS-X-76	76	34	1.22	26	73	1.3	Black
PCHS-X-113	113	51	1.00	25	113	2.0	Yellow
PCHS-X-130	130	59	1.00	25	130	2.3	Purple
PCHS-X-175	175	79	1.00	25	175	3.1	Silver
PCHS-X-210	210	95	1.00	25	210	3.8	Blue
PCHS-A-12	12	5	1.00	25	12	0.2	Red
PCHS-A-18	18	8	1.00	25	18	0.3	Gray
PCHS-A-25	25	11	1.00	25	25	0.4	Orange
PCHS-A-41	41	19	1.18	30	35	0.6	Pink
PCHS-A-56	56	25	1.14	29	49	0.9	Black
PCHS-A-73	73	33	1.06	27	69	1.2	Tan
PCHS-A-95	95	43	1.01	26	94	1.7	Green
PCHS-A-45	45	20	1.60	41	28	0.5	Blue
PCHS-A-75	75	34	1.50	38	50	0.9	Orange
PCHS-A-125	125	57	1.33	34	94	1.7	Brown
PCHS-A-200	200	91	1.15	29	174	3.1	Black
PCHS-A-310	310	141	1.00	25	310	5.5	Yellow
PCHS-A-400	400	182	1.00	25	400	7.2	Green
PCHS-A-510	510	232	1.00	25	510	9.1	Red
PCHS-A-625	625	284	1.00	25	625	11.2	White

LDS stands for **Low Dynamic Stiffness Bridge Bearing**
Natural Rubber to minimize noise and vibration transmission.

TYPE PCHS DIMENSIONS

Size Range	D		H		W		REX		MRD	
	(in)	(mm)	(in)	(mm)	(in)	(mm)	(in)	(mm)	(in)	(mm)
PCHS-X-23-210	21/2	64	41/4	108	27/8	73	13/4	45	3/8	10
PCHS-A-12-25	23/4	70	53/4	146	33/4	83	21/4	57	5/8	16
PCHS-A-41-95	23/4	70	53/4	146	33/4	83	21/4	57	5/8	16
PCHS-A-45-125	23/4	70	53/4	146	33/4	83	21/2	64	5/8	16
PCHS-A-200-625	23/4	70	53/4	146	33/4	83	21/2	64	5/8	16

REX - Rod Extension
MRD - Maximum Rod Diameter

All springs have additional travel to solid equal to 50% of the Rated Deflection.

PLAN VIEW OF HANGER LOCATIONS

TAG: _____

UNIT: _____



SPECIFIED DEFLECTION

1:	6:
2:	7:
3:	8:
4:	9:
5:	10:
Sets Required:	



MASON INDUSTRIES, Inc.

Manufacturers of Vibration Control Products

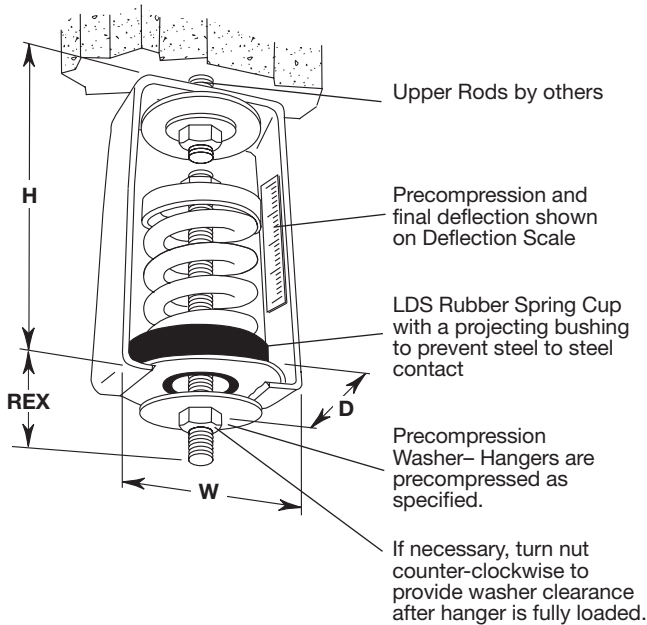
350 Rabro Drive
Hauppauge, NY 11788
631/348-0282
FAX 631/348-0279
Info@Mason-Ind.com

2101 W. Crescent Ave., Suite D
Anaheim, CA 92801
714/535-2727
FAX 714/535-5738
Info@MasonAnaheim.com
www.Mason-Ind.com

JOB NAME _____
 CUSTOMER _____
 CUSTOMER P.O. _____
 MASON M. _____
 DWG No. _____

PCHS

1" 25mm Deflection
 A, B, 1, 2 & 4 Series
 Precompressed
 Spring Hangers



LDS stands for **Low Dynamic Stiffness Bridge Bearing**
 Natural Rubber to minimize noise and vibration transmission.

TYPE PCHS RATINGS

Type and Size	Rated Capacity		Rated Defl.		Spring Constant		Spring Color
	(lbs)	(kg)	(in)	(mm)	(lbs/in)	(kg/mm)	
PCHS-A-45	45	20	1.60	41	28	0.5	Blue
PCHS-A-75	75	34	1.50	38	50	0.9	Orange
PCHS-A-125	125	57	1.33	34	94	1.7	Brown
PCHS-A-200	200	91	1.15	29	174	3.1	Black
PCHS-A-310	310	141	1.00	25	310	5.5	Yellow
PCHS-A-400	400	182	1.00	25	400	7.2	Green
PCHS-A-510	510	232	1.00	25	510	9.1	Red
PCHS-A-625	625	284	1.00	25	625	11.2	White
PCHS-B-65	65	30	2.45	62	31	0.6	Brown
PCHS-B-85	85	39	2.45	62	40	0.7	White/Blk
PCHS-B-115	115	52	2.35	60	57	1.0	Silver
PCHS-B-150	150	68	2.35	60	75	1.3	Orange
PCHS-B-280	280	127	1.95	50	174	3.1	Green
PCHS-B-450	450	204	1.66	42	344	6.1	Red
PCHS-B-750	750	341	1.47	37	670	12.0	White
PCHS-B-1000	1000	455	1.35	34	1000	17.9	Blue
PCHS-1-1000	1000	455	1.40	36	1000	17.9	Black
PCHS-1-1350	1350	614	1.40	36	1350	24.2	Yellow
PCHS-1-1750	1750	795	1.40	36	1750	31.3	Black*
PCHS-1-2100	2100	955	1.40	36	2100	37.6	Yellow*
PCHS-1-2385	2385	1084	1.40	36	2385	42.7	Yellow**
PCHS-1-2650	2650	1205	1.40	36	2650	47.4	Red*
PCHS-1-2935	2935	1334	1.40	36	2935	52.5	Red**
PCHS-2-2700	2700	1227	1.40	36	2700	48.3	Yellow
PCHS-2-3500	3500	1591	1.40	36	3500	62.6	Black*
PCHS-2-4200	4200	1909	1.40	36	4200	75.2	Yellow*
PCHS-4-5400	5400	2455	1.40	36	5400	96.6	Yellow
PCHS-4-7000	7000	3182	1.40	36	7000	125.3	Black*
PCHS-4-8400	8400	3818	1.40	36	8400	150.3	Yellow*
PCHS-4-9540	9540	2973	1.40	36	9540	117.0	Yellow**
PCHS-4-10600	10600	4818	1.40	36	10600	189.7	Red*
PCHS-4-11740	11740	5336	1.40	36	11740	210.1	Red**

TYPE PCHS DIMENSIONS

Size Range	D		H		W		REX		MRD	
	(in)	(mm)	(in)	(mm)	(in)	(mm)	(in)	(mm)	(in)	(mm)
PCHS-A-45-125	23/4	70	53/4	146	33/4	95	21/2	64	5/8	16
PCHS-A-200-625	23/4	70	53/4	146	33/4	95	21/2	64	5/8	16
PCHS-B-65-100	4	102	71/4	184	43/4	121	21/4	57	3/4	19
PCHS-1-1000-2935	4	102	8	203	51/4	133	21/4	57	7/8	22
PCHS-2-2700-4200	8	203	10	254	51/4	133	41/4	108	1	25
PCHS-4-4500-11740	83/4	222	131/2	344	6	152	41/2	114	11/4	32

REX - Rod Extension
 MRD - Maximum Rod Diameter

All springs have additional travel to solid equal to 50% of the Rated Deflection.

PLAN VIEW OF HANGER LOCATIONS

TAG: _____
 UNIT: _____



SPECIFIED DEFLECTION

1:	6:
2:	7:
3:	8:
4:	9:
5:	10:
Sets Required:	



MASON INDUSTRIES, Inc.

Manufacturers of Vibration Control Products

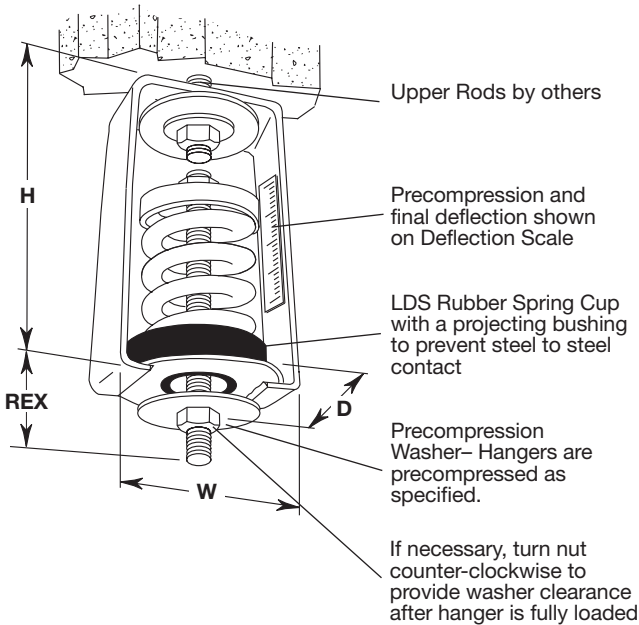
350 Rabro Drive
Hauppauge, NY 11788
631/348-0282
FAX 631/348-0279
Info@Mason-Ind.com

2101 W. Crescent Ave., Suite D
Anaheim, CA 92801
714/535-2727
FAX 714/535-5738
Info@MasonAnaheim.com
www.Mason-Ind.com

JOB NAME _____
 CUSTOMER _____
 CUSTOMER P.O. _____
 MASON M. _____
 DWG No. _____

PCHS

2" 50mm Deflection
 B, B2, C2, 2-C2
 & 4-C2
 Series Hangers



LDS stands for **Low Dynamic Stiffness Bridge Bearing** Natural Rubber to minimize noise and vibration transmission.

REX - Rod Extension
 MRD - Maximum Rod Diameter

TYPE PCHS RATINGS

Type and Size	Rated Capacity (lbs) (kg)		Rated Deflection [†] (in) (mm)		Spring Constant ^{††} (lbs/in) (kg/mm)		Spring Color
PCHS-B-20	20	9	2.40	61	8	0.15	Tan
PCHS-B-26	26	12	2.18	55	12	0.22	White/Blue
PCHS-B-35	35	16	2.20	56	16	0.29	Purple
PCHS-B-50	50	23	2.20	56	24	0.41	White/Red
PCHS-B-65	65	30	2.10	53	31	0.57	Brown
PCHS-B-85	85	39	2.10	53	40	0.74	White/Blk
PCHS-B-115	115	52	2.00	51	57	1.0	Silver
PCHS-B-150	150	68	2.00	51	75	1.3	Orange
PCHS-B2-210	210	96	2.12	54	99	1.8	Silver
PCHS-B2-290	290	132	2.00	51	144	2.6	Blue
PCHS-B2-450 [‡]	450	205	2.00	51	224	4.0	Tan
PCHS-B2-680 [‡]	680	309	2.00	51	340	6.1	Gray
PCHS-C2-125	125	57	2.50	64	50	0.9	Purple
PCHS-C2-170	170	77	2.40	61	70	1.3	Brown
PCHS-C2-210	210	96	2.30	58	90	1.7	Red
PCHS-C2-260	260	118	2.20	56	120	2.1	White
PCHS-C2-330	330	150	2.00	51	165	2.9	Black
PCHS-C2-460	460	209	2.00	51	230	4.1	Blue
PCHS-C2-610	610	277	2.00	51	305	5.4	Green
PCHS-C2-880 [‡]	880	400	2.00	51	440	7.8	Gray
PCHS-C2-1210 [‡]	1210	550	2.00	51	605	10.8	Silver
PCHS-C2-1540 [‡]	1540	700	2.00	51	770	13.7	Gray*
PCHS-C2-1870 [‡]	1870	850	2.00	51	935	16.7	Silver*
PCHS-2-C2-2420 [‡]	2420	1100	2.00	51	1210	21.6	Silver
PCHS-2-C2-3080 [‡]	3080	1400	2.00	51	1540	27.5	Gray*
PCHS-2-C2-3740 [‡]	3740	1700	2.00	51	1870	33.3	Silver*
PCHS-4-C2-3520 [‡]	3520	1600	2.00	51	1760	31.4	Gray
PCHS-4-C2-4840 [‡]	4840	2200	2.00	51	2420	43.1	Silver
PCHS-4-C2-6160 [‡]	6160	2800	2.00	51	3080	55.0	Gray*
PCHS-4-C2-7480 [‡]	7480	3400	2.00	51	3740	66.7	Silver*

*with Red inner spring

[‡]Published ratings allow minimum 25% additional travel to solid. For a full 50% specified minimum, use the ratings shown in the table below.

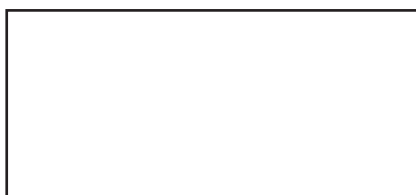
TYPE PCHS DIMENSIONS

Size Range	D (in) (mm)		H (in) (mm)		W (in) (mm)		REX (in) (mm)		MRD (in) (mm)
PCHS-B-20-150	4	102	7 1/4	184	4 3/4	121	2 1/4	57	3/4 19
PCHS-B-210-680	4	102	7 1/4	184	4 3/4	121	2 1/4	57	3/4 19
PCHS-C2-125-1870	4	102	8	203	5 1/4	133	2 1/4	57	7/8 22
PCHS-2-C2-2420-3740	9	229	10	254	5 1/4	133	4 1/4	108	1 25
PCHS-4-C2-3520-7480	7	178	13	330	8 7/8	225	4 1/2	114	1 1/4 32

Size	Derated Capacity		Deflection		Size	Derated Capacity		Deflection	
	(lbs)	(kg)	(in)	(mm)		(lbs)	(kg)	(in)	(mm)
B2-450	410	186	1.83	46.5	2-C2-2420	2020	918	1.67	42.4
B2-680	565	257	1.66	42.2	2-C2-3080	2570	1168	1.67	42.4
C2-880	800	364	1.82	46.2	2-C2-3740	3120	1418	1.67	42.4
C2-1210	1010	459	1.67	42.4	4-C2-3520	3600	1636	1.82	46.2
C2-1540	1285	584	1.67	42.4	4-C2-4840	4040	1836	1.67	42.4
C2-1870	1560	709	1.67	42.4	4-C2-6160	5145	2339	1.67	42.4
					4-C2-7480	6245	2839	1.67	42.4

PLAN VIEW OF HANGER LOCATIONS

TAG: _____
 UNIT: _____



SPECIFIED DEFLECTION

1:	6:
2:	7:
3:	8:
4:	9:
5:	10:
Sets Required:	