



MASON INDUSTRIES, Inc.

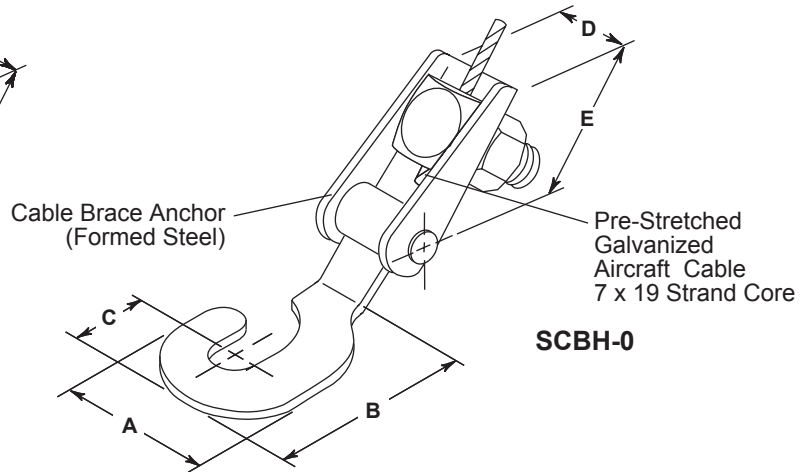
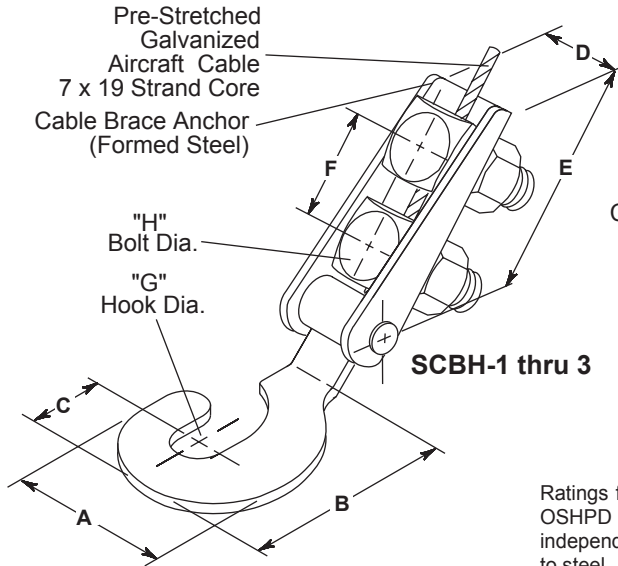
Manufacturers of Vibration Control Products

350 Rabro Drive 2101 W. Crescent Ave., Suite D
Hauppauge, NY 11788 Anaheim, CA 92801
631/348-0282 714/535-2727
FAX 631/348-0279 FAX 714/535-5738
Info@Mason-Ind.com Info@MasonAnaheim.com
www.Mason-Ind.com

JOB NAME _____
CUSTOMER _____
CUSTOMER P.O. _____
MASON M. _____
DWG. NO. _____

SCBH

SEISMIC CABLE
BRACE HOOK
ANCHOR &
ASSEMBLY



Ratings for SCBH-1 thru -3 are from test data and calculations used to obtain California OSHPD Preapproval Number OPA-0349. Testing was supervised and certified by an independent engineer registered in the State of California. Ratings are based on attachment to steel. SCBH assemblies will fit rod sizes as tabulated. Preferred installation angle is 45°. Maximum variation is $\pm 15^\circ$.

TYPE SCBH DIMENSIONS (inches mm)

Size	For use with Rod Sizes	A	B	C	D	E	F	G	H
SCBH-0	3/8 10	1 3/8 35	2 1/16 52	11/16 17	15/16 24	1 3/4 44	-- --	3/8 10	1/2 13
SCBH-1	1/2, 5/8 13, 16	1 7/8 48	2 3/8 60	1 25	1 25	3 3/8 86	1 1/2 38	5/8 16	1/2 13
SCBH-2	3/4, 7/8 19, 22	2 7/8 73	3 3/4 95	1 3/8 35	1 3/16 30	4 3/8 111	1 3/4 44	7/8 22	5/8 16
SCBH-3	1, 1 1/8 25, 29	3 1/2 89	4 3/4 121	1 3/4 44	1 7/16 37	4 3/4 121	2 51	1 1/8 29	3/4 19

APPROVED

California Office of Statewide
Health Planning and Development

FIXED EQUIPMENT ANCHORAGE
OPA-0349 AUGUST 5, 2002



Bill Staehlin
Bill Staehlin (916) 654-3362

TYPE SCBH ASSEMBLY RATINGS AS CONTROLLED BY CABLE BREAKING STRENGTH

Size	Cable Diameter		OSHPD Max. Ratings			Torque on Bolts		
	in	mm	lbs	kN	kg	ft-lbs	N-m	kg-m
SCBH-0	1/16*	1.6	235	1.0	107	30	41	4.2
SCBH-0	3/32*	2.4	460	2.1	209	30	41	4.2
SCBH-0	3/32	2.4	500	2.2	227	30	41	4.2
SCBH-1	1/8	3	975	4.3	442	25	34	3.5
SCBH-2	3/16	5	2050	9.1	930	45	61	6.2
SCBH-3	1/4	6	3150	14.0	1429	55	75	7.6

* 7 x 7 STRAND CORE

TYPE	QTY.	TAG