



MASON INDUSTRIES, Inc.

MERCER RUBBER Co.

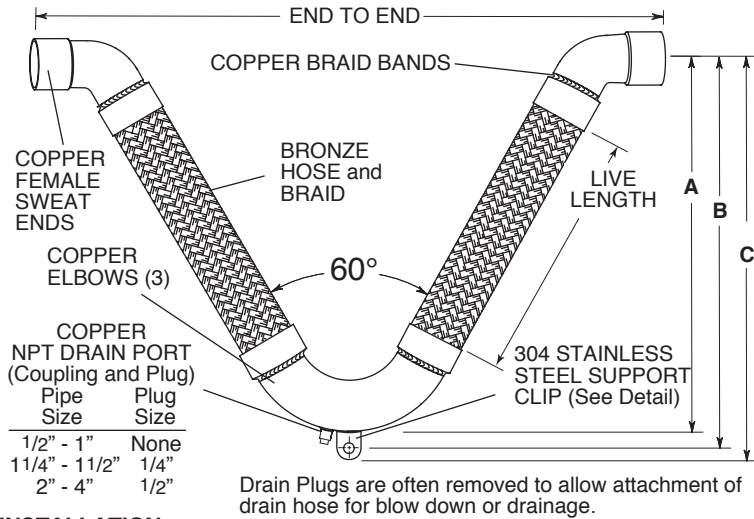
350 Rabro Drive, Hauppauge, NY 11788
Mason- 631/348-0282 • Info@Mason-Ind.com
Mercer- 631/582-1524 • Info@Mercer-Rubber.com
FAX 631/348-0279



JOB NAME
CUSTOMER
CUSTOMER P.O.
MASON M.
DWG No.

VCPSB-NSF

60Vee BRONZE BRAIDED HOSE with COPPER FEMALE SWEAT ENDS for DRINKING WATER SYSTEMS



WARNING! If disinfecting (chlorinating) is required per the International Plumbing Code, AWWA C651, and AWWA C652, then tablets and granular chlorine (calcium hypochlorite), and chlorine for swimming pool disinfection CANNOT be used on our products.

LEAD FREE: The surface contacted by consumable water contains less than one quarter of one percent (0.25%) of lead by weight.

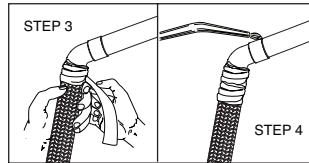


Mason Industries ensures for all UL Listed Products:

- 1. All hose dimensions meet our specifications and dimensions as tabulated.
2. Each assembly is pressure tested using Nitrogen Gas for 1 minute at 1 1/2 times the rated working pressure with no leaks.
3. Threads on the drain port are checked using a certified thread gauge to make certain that the threads were machined in accordance to ANSI/ASME B1.20.1.
4. A metal tag is attached which shows the UL Mark and Identification Number, our name, the location (US), and the Part Number with the approval date (month and year).
5. Two product stickers which show the UL Mark and Identification Number are on each shipping crate.

INSTALLATION:

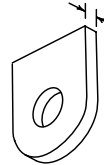
- 1. Thoroughly clean male and female ends using steel wool and steel brushes.
2. Apply flux. Do not sweat or braze with a non-water soluble or chlorinated flux. This can leave behind residues that may corrode and cause premature failure of bronze components, which will void warranty.
3. Wrap base of copper fitting on connector and 2" (50mm) of the braid with a wet cloth to prevent overheating during soldering.
4. Direct the torch away from the base of the copper fitting and braided section. Avoid contact of the flame with the base of the copper fitting and braid. Heat end of copper fitting for proper flow of silver solder. Silver solder flows at approximately 430°F (221°C).
5. Use caution with brazing rod or other higher temperature techniques. Overheating will cause leaks.
6. Remove wet cloth and remove all soldering flux immediately after installation. Flux can cause premature failure of joint.



304 STAINLESS STEEL SUPPORT CLIP

Table with columns: Pipe Size (in/mm), SUPPORT CLIP Hole Diameter (in/mm), and SUPPORT CLIP Thickness (in/mm). Rows include sizes like 1/2, 3/4, 1, 1 1/4, 1 1/2, 2, 2 1/2, 3, 4.

CLIP THICKNESS



SUPPORT CLIP DETAIL

Conforms to UL and Annex G of ANSI/NSF-61 and NSF-372 Approved Temperature Range.

When using these products in stainless steel water systems, dielectric unions must be used on each end to prevent leakage from galvanic action.

RATED MOVEMENTS

±4" (100mm) All Directional Seismic Movement
±6" (150mm) Guided Thermal Movement Only

Vacuum rating varies with size and application. Consult factory on all vacuum applications.

VCPSB-NSF DIMENSIONS AND PRESSURE RATINGS (American Units)

Table with columns: Tubing Size & End to End (in), Live Length (in), Corrugations per foot, A (in), B (in), C (in), and Rated Pressure @70°F (psi). Rows include sizes like 1/2x21 1/2, 3/4x21 5/8, 1x24 3/8, 11/4x26 3/4, 11/2x30 1/8, 2x34 3/8, 2 1/2x40, 3x45, 4x53 1/8.

VCPSB-NSF DIMENSIONS AND PRESSURE RATINGS (Metric Units)

Table with columns: Tubing Size & End to End (mm), Live Length (mm), Corrugations per meter, A (mm), B (mm), C (mm), and Rated Pressure @21°C (kg/cm²). Rows include sizes like 15x546, 20x549, 25x594, 32x679, 40x765, 50x873, 65x1016, 80x1143, 100x1349.

End to End Tolerance: minus 1% plus 3%. Minimum Burst is four times the Rated Pressure. Safety factor of 4. Female end fits over copper tubing, e.g. 1/2 x 21 1/2 (15 x 546mm) fits over 1/2" (15mm) tubing.

Table with columns: QTY, SIZE, TAG

Table with columns: QTY, SIZE, TAG