



MASON INDUSTRIES, Inc.

MERCER RUBBER Co.

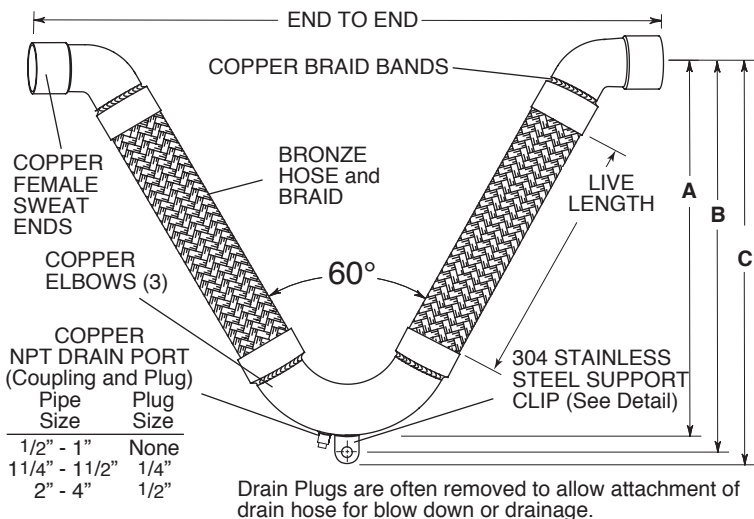
350 Rabro Drive, Hauppauge, NY 11788
Mason- 631/348-0282 • Info@Mason-Ind.com
Mercer- 631/582-1524 • Info@Mercer-Rubber.com
FAX 631/348-0279



JOB NAME _____
CUSTOMER _____
CUSTOMER P.O. _____
MASON M. _____
DWG No. _____

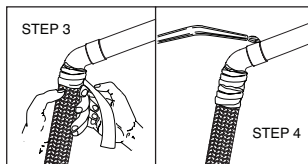
VCPSB-NSF

60Vee BRONZE
BRAIDED HOSE with
COPPER FEMALE
SWEAT ENDS for
DRINKING WATER
SYSTEMS



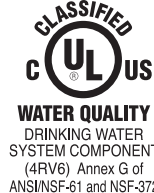
INSTALLATION:

1. Thoroughly clean male and female ends using steel wool and steel brushes.
2. Apply flux. Do not sweat or braze with a non-water soluble or chlorinated flux. This can leave behind residues that may corrode and cause premature failure of bronze components, which will void warranty.
3. Wrap base of copper fitting on connector and 2" (50mm) of the braid with a wet cloth to prevent overheating during soldering.
4. Direct the torch away from the base of the copper fitting and braided section. Avoid contact of the flame with the base of the copper fitting and braid. Heat end of copper fitting for proper flow of silver solder. Silver solder flows at approximately 430°F (221°C).
5. Use caution with brazing rod or other higher temperature techniques. Overheating will cause leaks.
6. Remove wet cloth and remove all soldering flux immediately after installation. Flux can cause premature failure of joint.



WARNING! If additional chlorinating, sanitizing, or disinfecting is required for this system, granular chlorine is not recommended since it may leave behind undissolved granules that can cause corrosion and lead to premature failure of bronze components. System must be thoroughly dechlorinated with clean water immediately after chlorination process. Failure to do so will void warranty.

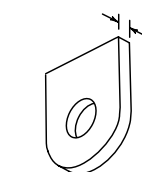
LEAD FREE: The surface contacted by consumable water contains less than one quarter of one percent (0.25%) of lead by weight. These flexible joint fitting assemblies are UL Listed under File MH48651 and are intended for installation in accordance with the Mason installation instructions and the applicable requirements in Annex G of ANSI/NSF-61 and NSF-372.



Mason Industries ensures for all UL Listed Products:

1. All hose dimensions meet our specifications and dimensions as tabulated.
2. Each assembly is pressure tested using Nitrogen Gas for 1 minute at 1 1/2 times the rated working pressure with no leaks.
3. Threads on the drain port are checked using a certified thread gauge to make certain that the threads were machined in accordance to ANSI/ASME B1.20.1.
4. A metal tag is attached which shows the UL Mark and Identification Number, our name, the location (US), and the Part Number with the approval date (month and year).
5. Two product stickers which show the UL Mark and Identification Number are on each shipping crate.

CLIP THICKNESS



SUPPORT CLIP DETAIL

304 STAINLESS STEEL SUPPORT CLIP

| Pipe Size (in) | Pipe Size (mm) | SUPPORT CLIP Hole Diameter (in) | SUPPORT CLIP Hole Diameter (mm) | Thickness (in) | Thickness (mm) |
|----------------|----------------|---------------------------------|---------------------------------|----------------|----------------|
| 1/2 | 13 | 1/2 | 13 | 1/8 | 3 |
| 3/4 | 20 | 1/2 | 13 | 1/8 | 3 |
| 1 | 25 | 1/2 | 13 | 1/8 | 3 |
| 1 1/4 | 32 | 1/2 | 13 | 1/8 | 3 |
| 1 1/2 | 40 | 1/2 | 13 | 1/8 | 3 |
| 2 | 50 | 5/8 | 16 | 1/8 | 3 |
| 2 1/2 | 65 | 5/8 | 16 | 1/8 | 3 |
| 3 | 80 | 3/4 | 19 | 1/8 | 3 |
| 4 | 100 | 3/4 | 19 | 1/8 | 3 |

Conforms to UL and Annex G of ANSI/NSF-61 and NSF-372 Approved Temperature Range.

RATED MOVEMENTS

±4" (100mm) All Directional Seismic Movement
±6" (150mm) Guided Thermal Movement Only

Vacuum rating varies with size and application. Consult factory on all vacuum applications.

When using VCPSB-NSF products in stainless steel water systems, dielectric unions must be used on each end to prevent leakage from galvanic action.

VCPSB-NSF DIMENSIONS AND PRESSURE RATINGS (American Units)

| Tubing Size & End to End (in) | Live Length (in) | Corrugations per foot | A (in) | B (in) | C (in) | Rated Pressure @70°F (psi) |
|-------------------------------|------------------|-----------------------|--------|--------|--------|----------------------------|
| 1/2x21 1/2 | 14 | 73 | 15 | 15 3/4 | 16 1/4 | 500 |
| 3/4x21 5/8 | 15 | 67 | 15 3/4 | 16 1/2 | 17 | 470 |
| 1x24 3/8 | 16 | 58 | 17 | 17 3/4 | 18 1/4 | 450 |
| 1 1/4x26 3/4 | 17 | 55 | 18 3/8 | 19 1/8 | 19 5/8 | 400 |
| 1 1/2x30 1/8 | 19 | 53 | 20 5/8 | 21 3/8 | 21 7/8 | 335 |
| 2x34 3/8 | 20 | 51 | 22 1/2 | 23 1/2 | 24 1/4 | 235 |
| 2 1/2x40 | 22 | 34 | 25 7/8 | 26 7/8 | 27 5/8 | 230 |
| 3x45 | 24 | 30 | 28 5/8 | 29 7/8 | 30 7/8 | 225 |
| 4x53 1/8 | 26 | 28 | 32 3/8 | 33 5/8 | 34 5/8 | 220 |

VCPSB-NSF DIMENSIONS AND PRESSURE RATINGS (Metric Units)

| Tubing Size & End to End (mm) | Live Length (mm) | Corrugations per meter | A (mm) | B (mm) | C (mm) | Rated Pressure @21°C (kg/cm²) |
|-------------------------------|------------------|------------------------|--------|--------|--------|-------------------------------|
| 15x546 | 356 | 240 | 381 | 400 | 413 | 34 |
| 20x549 | 381 | 220 | 400 | 419 | 432 | 32 |
| 25x594 | 406 | 190 | 432 | 451 | 464 | 31 |
| 32x679 | 432 | 180 | 467 | 486 | 498 | 28 |
| 40x765 | 483 | 174 | 524 | 543 | 556 | 23 |
| 50x873 | 508 | 167 | 572 | 597 | 616 | 16 |
| 65x1016 | 559 | 112 | 657 | 683 | 702 | 16 |
| 80x1143 | 610 | 98 | 727 | 759 | 784 | 15 |
| 100x1349 | 660 | 92 | 822 | 854 | 879 | 15 |

End to End Tolerance: minus 1% plus 3%. Minimum Burst is four times the Rated Pressure. Safety factor of 4.
Female end fits over copper tubing, e.g. 1/2 x 21 1/2 (15 x 546mm) fits over 1/2" (15mm) tubing.

| QTY | SIZE | TAG |
|-----|------|-----|
| | | |
| | | |

| QTY | SIZE | TAG |
|-----|------|-----|
| | | |
| | | |