



MASON INDUSTRIES, Inc.

MERCER RUBBER Co.

350 Rabro Drive, Hauppauge, NY 11788
Mason- 631/348-0282 • Info@Mason-Ind.com
Mercer- 631/582-1524 • Info@Mercer-Rubber.com
FAX 631/348-0279



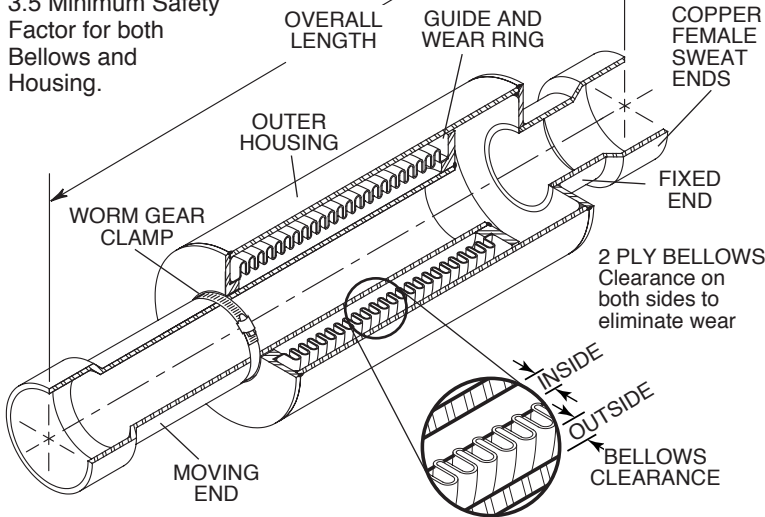
JOB NAME
CUSTOMER
CUSTOMER P.O.
MASON M.
DWG No.

ECCPS-NSF

2" (50mm) Movement
SS EXPANSION COMPENSATOR with COPPER SWEAT ENDS

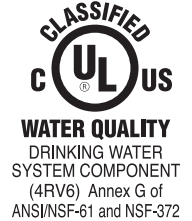
ALL COMPONENTS STAINLESS STEEL (except where noted)

Bellows are externally pressurized. 3.5 Minimum Safety Factor for both Bellows and Housing.



WARNING! If additional chlorinating, sanitizing, or disinfecting is required for this system, granular chlorine is not recommended since it may leave behind undissolved granules that can cause corrosion and lead to premature failure of components.

LEAD FREE: The surface contacted by consumable water contains less than one quarter of one percent (0.25%) of lead by weight.



Mason Industries ensures for all UL Listed Products:

- 1. All hose dimensions meet our specifications and dimensions as tabulated.
2. Each assembly is pressure tested using Nitrogen Gas for 1 minute at 1 1/2 times the rated working pressure with no leaks.
3. A metal tag is attached which shows the UL Mark and Identification Number, our name, the location (US), and the Part Number with the approval date (month and year).
4. Two product stickers which show the UL Mark and Identification Number are on each shipping crate.

Vacuum rating varies with size and application. Consult factory on all vacuum applications.

Conforms to UL and ANSI/NSF 372 Approved Temperature Range.

INSTALLATION:

- 1. Thoroughly clean male and female ends using steel wool and steel brushes.
2. Apply flux.
3. Heat joint for proper flow of silver solder. Silver solder flows around 430°F. Composition is silver and tin only. There should be no lead content.
4. Use caution with brazing rod or other high temperature techniques. Overheating will cause leaks.
5. Remove Worm Gear Clamp.

ECCPS-NSF DIMENSIONS AND PRESSURE RATINGS (American & Metric Units) 2" (50mm) COMPRESSION, 1/2" (13mm) EXTENSION

Table with columns: Pipe Size, Overall Length, ME (Moving End), FE (Fixed End), Outer Housing O.D., Nominal Bellows Clearance (Inside/Outside), Spring Rate, Thrust @ 200 psi, Rated Pressure @ 70°F, Ship Wt.

Female end fits over copper tubing, e.g. 1 1/2" (40mm) fits over 1 1/2" (40mm) tubing.

Lower Thrust Forces in proportion at lower pressures, i.e. 100 psi Force = 100/200 x published Thrust. Forces on Pipe Anchors must include Thrust Force and Spring Force.

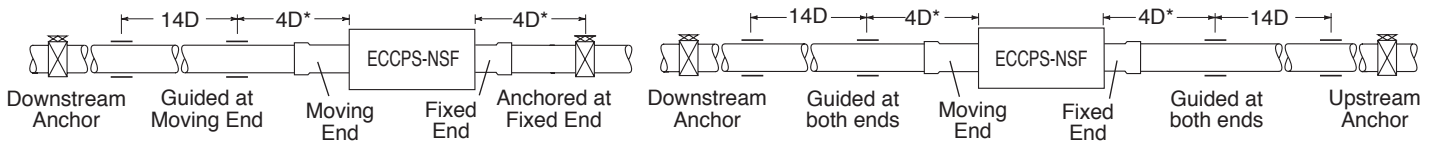
EC's installed in piping systems must be anchored on both sides of the joint. EC's installed in unanchored piping must have control rods.

When using ECCPS products in stainless steel water systems, dielectric unions must be used on each end to prevent leakage from galvanic action.

GUIDE SPACING - Referencing Pipe Diameter "D"

Guides and Anchor for ECCPS-NSF located near Anchor

Guides and Anchors for ECCPS-NSF located between Anchors



\*Plus an additional 3" (76mm) for Sizes 3/4" to 2 1/2"

Inventory table with columns: QTY, SIZE, TAG. Includes Certification Form S-5047 09/2018 and fields for DWN, CHKD, DATE, DWG No.