



# MASON INDUSTRIES, Inc.

Manufacturers of Vibration Control Products

350 Rabro Drive  
Hauppauge, NY 11788  
631/348-0282  
FAX 631/348-0279

2101 W. Crescent Ave., Suite D  
Anaheim, CA 92801  
714/535-2727  
FAX 714/535-5738

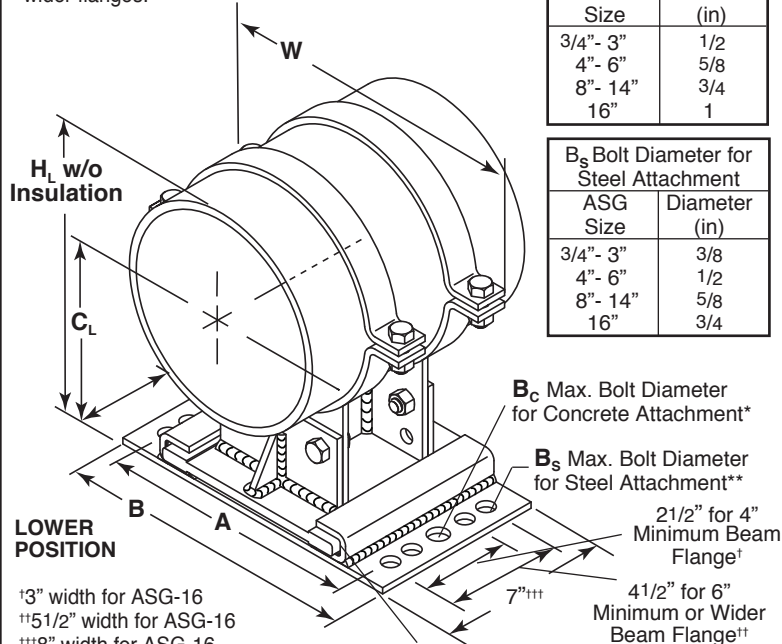
Info@Mason-Ind.com • www.Mason-Ind.com

JOB NAME \_\_\_\_\_  
CUSTOMER \_\_\_\_\_  
CUSTOMER P.O. \_\_\_\_\_  
MASON M. \_\_\_\_\_  
DWG No. \_\_\_\_\_

# ASG

**CARBON STEEL  
ADJUSTABLE  
PIPE SLIDING  
GUIDE  
(American Units)**

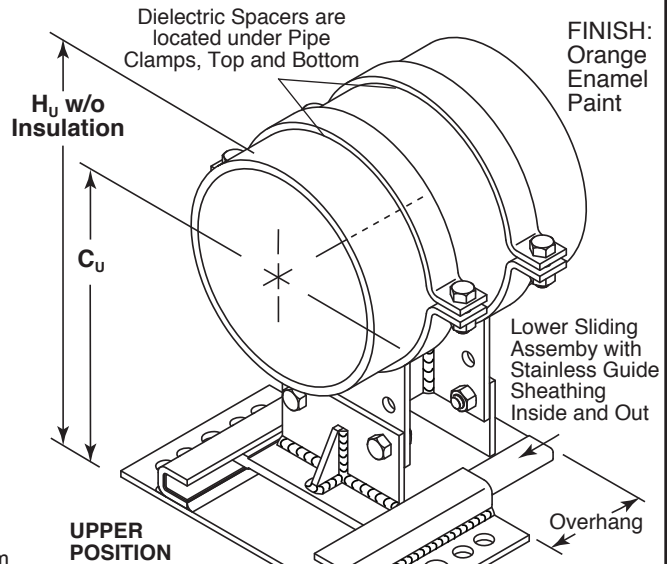
\*Use two bolts for concrete attachment.  
\*\*Use four bolts for steel attachment. Use inner holes for narrow steel flange widths or outer holes for wider flanges.



B <sub>C</sub> Bolt Diameter for Concrete Attachment	
ASG Size	Diameter (in)
3/4" - 3"	1/2
4" - 6"	5/8
8" - 14"	3/4
16"	1

B <sub>S</sub> Bolt Diameter for Steel Attachment	
ASG Size	Diameter (in)
3/4" - 3"	3/8
4" - 6"	1/2
8" - 14"	5/8
16"	3/4

All Material is Carbon Steel except where noted.



Total Combined Movement is the sum of Expansion and Contraction. e.g., 6" Movement may comprise 4" Expansion and 2" Contraction.

**Combined Movement**  
Sizes 3/4" - 2 1/2" - 4"  
Sizes 3" thru 16" - 6"

**ASG LOWER POSITION C<sub>L</sub> & H<sub>L</sub>**  
Sizes 3/4" to 16" 2 1/2" Insulation Max.

Pipe Size (in)	Q <sub>C</sub> Pipe Height C <sub>L</sub> (in)	Overall Height without Insulation		Maximum Insulation Thickness Lower Position (in)	A (in)	B (in)	W (in)
		H <sub>L</sub> (in)	H <sub>L</sub> (in)				
3/4	33/4	41/2	2	51/2	63/4	31/4	
1	41/8	5	2	6	71/4	35/8	
1 1/4	43/8	53/8	2	6	71/4	4	
1 1/2	41/2	55/8	2	6	71/4	41/4	
2	43/4	61/8	2	6	71/4	43/4	
2 1/2	5	65/8	2	6	71/4	51/4	
3	53/8	71/4	2 1/2	6 1/2	73/4	6	
4	65/8	9	2 1/2	7 1/4	81/2	7 1/4	
5	71/8	10 1/16	2 1/2	8	91/4	8 1/2	
6	75/8	11 1/8	2 1/2	8 3/4	10	9 1/2	
8	9	13 1/2	2 1/2	10 1/2	12 1/4	11 3/4	
10	10 3/4	16 1/4	2 1/2	11 1/2	13 1/4	14 5/8	
12	11 7/8	18 3/4	2 1/2	13	14 3/4	16 3/4	
14	12 5/8	20	2 1/2	16	17 3/4	18 1/8	
16	13 7/8	22 1/4	2 1/2	18 1/2	20 1/2	20 1/2	

**ASG UPPER POSITION C<sub>U</sub> & H<sub>U</sub>**  
Sizes 1" to 16" for 3" to 4" Insulation

Note: 3/4" size cannot be raised

Pipe Size (in)	Q <sub>C</sub> Pipe Height C <sub>U</sub> (in)	Overall Height without Insulation		Maximum Insulation Thickness Upper Position (in)
		H <sub>U</sub> (in)	H <sub>U</sub> (in)	
3/4	33/4	41/2	2	
1	51/8	6	3	
1 1/4	53/8	63/8	3	
1 1/2	51/2	65/8	3	
2	53/4	71/8	3	
2 1/2	6	75/8	3	
3	63/8	81/4	3	
4	81/8	10 1/2	4	
5	85/8	11 9/16	4	
6	91/8	12 5/8	4	
8	10 1/2	15	4	
10	12 1/4	17 3/4	4	
12	13 3/8	20 1/4	4	
14	14 1/8	21 1/2	4	
16	15 3/8	23 3/4	4	

**ASG LOAD RATINGS**

ASG Pipe Size (in)	Rated Pipe Load (lbs)		
	Rated Base Mounted Pipe Load (lbs)	Rated Hanging Pipe Load (lbs)	Rated Transverse Pipe Load (lbs)
3/4	1200	1200	750
1	1200	1200	750
1 1/4	1200	1200	750
1 1/2	1200	1200	750
2	1200	1200	750
2 1/2	1200	1200	750
3	1850	1700	1000
4	1900	1800	1050
5	1925	1830	1100
6	1950	1950	1300
8	3050	2775	1850
10	5550	4350	2750
12	5600	5600	3950
14	7000	7000	5500
16	8800	8800	7300

Copper tubing will require Dielectric Spacers supplied by Mason through 4" size only. Safety Factor of 5.

QUANTITY	ASG SIZE	INSULATION	MOVEMENT	TAG



# MASON INDUSTRIES, Inc.

Manufacturers of Vibration Control Products

350 Rabro Drive  
Hauppauge, NY 11788  
631/348-0282  
FAX 631/348-0279

2101 W. Crescent Ave., Suite D  
Anaheim, CA 92801  
714/535-2727  
FAX 714/535-5738

Info@Mason-Ind.com • www.Mason-Ind.com

JOB NAME \_\_\_\_\_  
 CUSTOMER \_\_\_\_\_  
 CUSTOMER P.O. \_\_\_\_\_  
 MASON M. \_\_\_\_\_  
 DWG No. \_\_\_\_\_

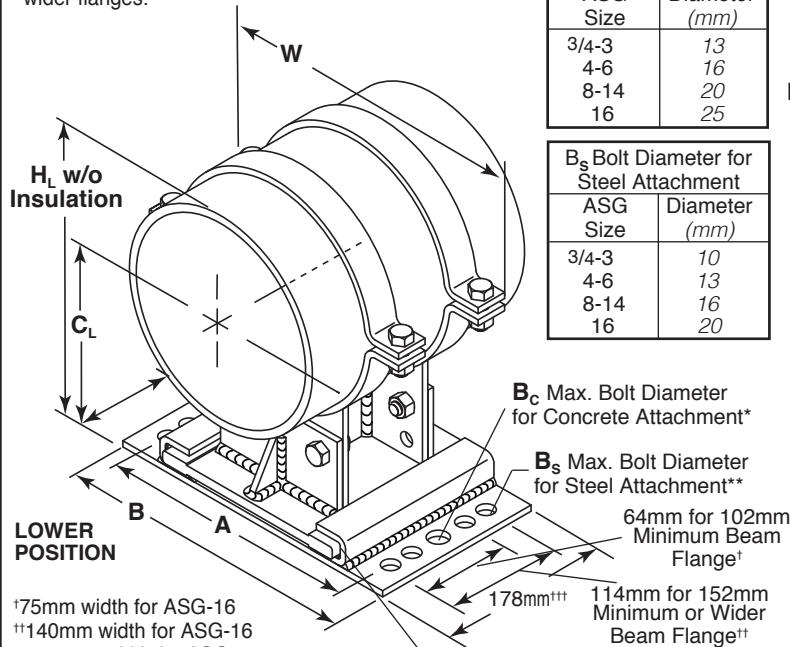
# ASG

**CARBON STEEL  
 ADJUSTABLE  
 PIPE SLIDING  
 GUIDE  
 (Metric Units)**

\*Use two bolts for concrete attachment.  
 \*\*Use four bolts for steel attachment. Use inner holes for narrow steel flange widths or outer holes for wider flanges.

B <sub>c</sub> Bolt Diameter for Concrete Attachment	
ASG Size	Diameter (mm)
3/4-3	13
4-6	16
8-14	20
16	25

B <sub>s</sub> Bolt Diameter for Steel Attachment	
ASG Size	Diameter (mm)
3/4-3	10
4-6	13
8-14	16
16	20



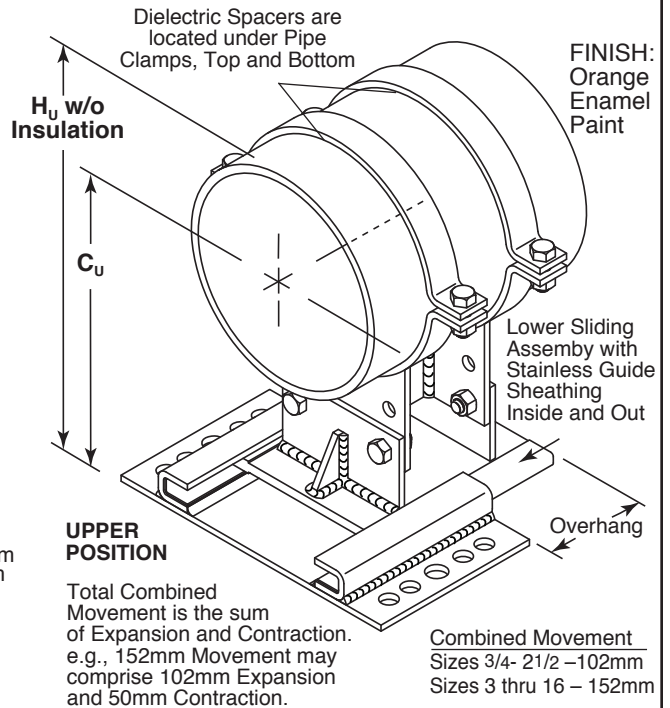
†75mm width for ASG-16  
 ††140mm width for ASG-16  
 †††203mm width for ASG-16  
 127mm width for ASG-13mm thru 64mm

Retaining Channel and Sliding Foot are lined with Stainless Steel.

**ASG LOWER POSITION C<sub>L</sub> & H<sub>L</sub>**  
 Sizes 3/4 to 16 64mm Insulation Max.

Type & Size	Pipe Size (mm)	Q Pipe Height C <sub>L</sub> (mm)	Overall Height without Insulation		Maximum Insulation Thickness Lower Position (mm)	A (mm)	B (mm)	W (mm)
			H <sub>L</sub> (mm)	H <sub>L</sub> (mm)				
ASG-3/4	20	95	114	51	140	172	83	
ASG-1	25	105	127	51	152	184	92	
ASG-1 1/4	32	111	137	51	152	184	102	
ASG-1 1/2	40	114	143	51	152	184	108	
ASG-2	50	121	156	51	152	184	121	
ASG-2 1/2	65	127	168	51	152	184	133	
ASG-3	80	137	184	64	164	196	152	
ASG-4	100	168	229	64	184	216	184	
ASG-5	125	181	255	64	204	235	216	
ASG-6	150	194	283	64	222	254	240	
ASG-8	200	229	343	64	267	311	298	
ASG-10	250	273	413	64	292	337	372	
ASG-12	300	302	476	64	330	375	426	
ASG-14	350	321	508	64	406	451	460	
ASG-16	400	352	565	64	470	521	521	

All Material is Carbon Steel except where noted.



Total Combined Movement is the sum of Expansion and Contraction. e.g., 152mm Movement may comprise 102mm Expansion and 50mm Contraction.

Combined Movement  
 Sizes 3/4- 2 1/2 - 102mm  
 Sizes 3 thru 16 - 152mm

**ASG UPPER POSITION C<sub>U</sub> & H<sub>U</sub>**  
 Sizes 1 to 16 76 to 102mm Insulation

Note: ASG-3/4 cannot be raised

Q Pipe Height C <sub>U</sub> (mm)	Overall Height without Insulation		Maximum Insulation Thickness Upper Position (mm)
	H <sub>U</sub> (mm)	H <sub>U</sub> (mm)	
95	114	51	
130	152	76	
137	162	76	
140	168	76	
146	181	76	
152	194	76	
162	210	76	
206	267	102	
219	294	102	
232	321	102	
267	381	102	
311	451	102	
340	514	102	
359	546	102	
391	603	102	

**ASG LOAD RATINGS**

Rated Base Mounted Pipe Load (kgs)	Rated Hanging Pipe Load (kgs)	Rated Transverse Pipe Load (kgs)
544	544	340
544	544	340
544	544	340
544	544	340
544	544	340
544	544	340
839	771	454
862	816	476
873	830	499
885	885	590
1383	1259	839
2517	1973	1247
2540	2540	1792
3175	3175	2495
3992	3992	3311

Copper tubing will require Dielectric Spacers supplied by Mason through 100mm size only. Safety Factor of 5.

QUANTITY	ASG SIZE	INSULATION	MOVEMENT	TAG