



MASON INDUSTRIES, Inc.

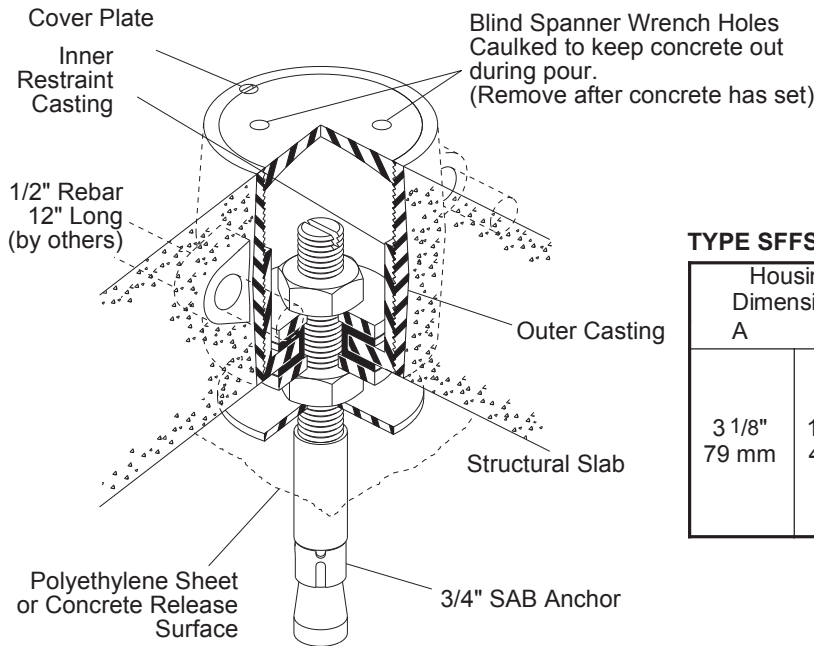
Manufacturers of Vibration Control Products
 350 Rabro Drive 2101 W. Crescent Ave., Suite D
 Hauppauge, NY 11788 Anaheim, CA 92801
 631/348-0282 714/535-2727
 FAX 631/348-0279 FAX 714/535-5738
 Info@Mason-Ind.com Info@MasonAnaheim.com
 www.Mason-Ind.com

JOB NAME _____
 CUSTOMER _____
 CUSTOMER P.O. _____
 MASON M.I. _____
 DWG. NO. _____

SFFS

Seismic Floating
 Floor Snubber

POSITION 1 (FLOOR IN POURED POSITION)

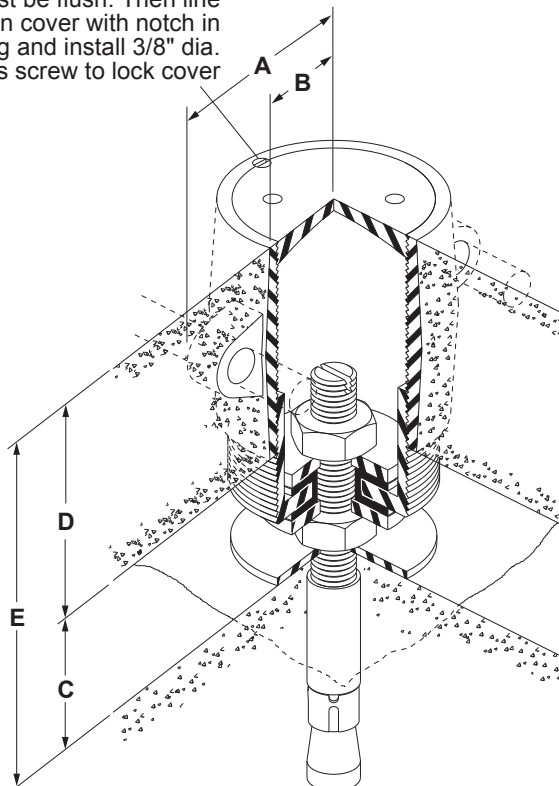


TYPE SFFS DIMENSIONS

Housing Dimensions		Air Gap	Floor Thickness	Overall Height
A	B	C	D	E
3 1/8" 79 mm	1 15/16" 49 mm	Most Common 1" or 2" 25 or 50 mm Occasionally 3" or 4" 75 or 100 mm	Minimum 3" - 75 mm Most Common 4" - 100 mm Occasionally 6" thru 12" 150 - 300 mm	Air Gap plus Floor Thickness

POSITION 2 (FLOOR IN RAISED POSITION)

Cover must be flush. Then line up notch in cover with notch in housing and install 3/8" dia. brass screw to lock cover



TYPE SFFS RATINGS

Allowable Vertical Loading of 3/4" SAB	= 2330 lbs. (10.35 kN)
Allowable Horizontal Loading of 3/4" SAB	= 3340 lbs. (14.85 kN)
Allowable Vertical Loading of Housing	= 5520 lbs. (24.55 kN)
Allowable Horizontal Loading of Housing	= 7750 lbs. (34.50 kN)

NOTE : Capacity of Snubber is dictated by allowable loads of 3/4" SAB Anchor Bolt.

APPROVED

California Office of Statewide
 Health Planning and Development

FIXED EQUIPMENT ANCHORAGE

OPA-0194 January 6, 2003



Bill Staehlin

Bill Staehlin (916) 654-3362

Illustrated housing is for 4" thick floating floors.
 Other configurations are available for 3", 5" and 6" thick
 floating floors as required.