



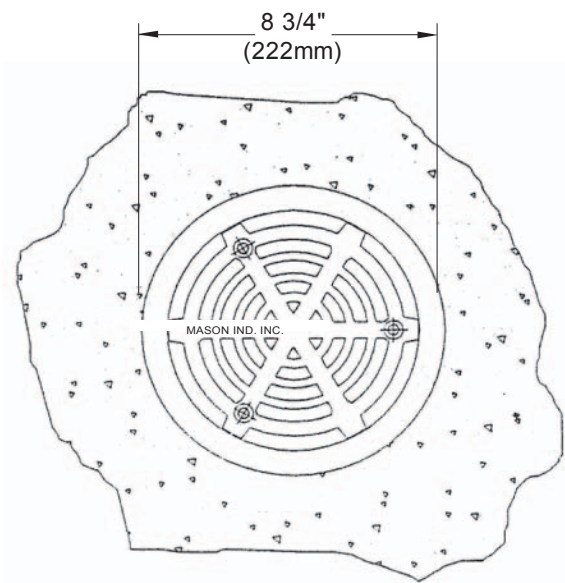
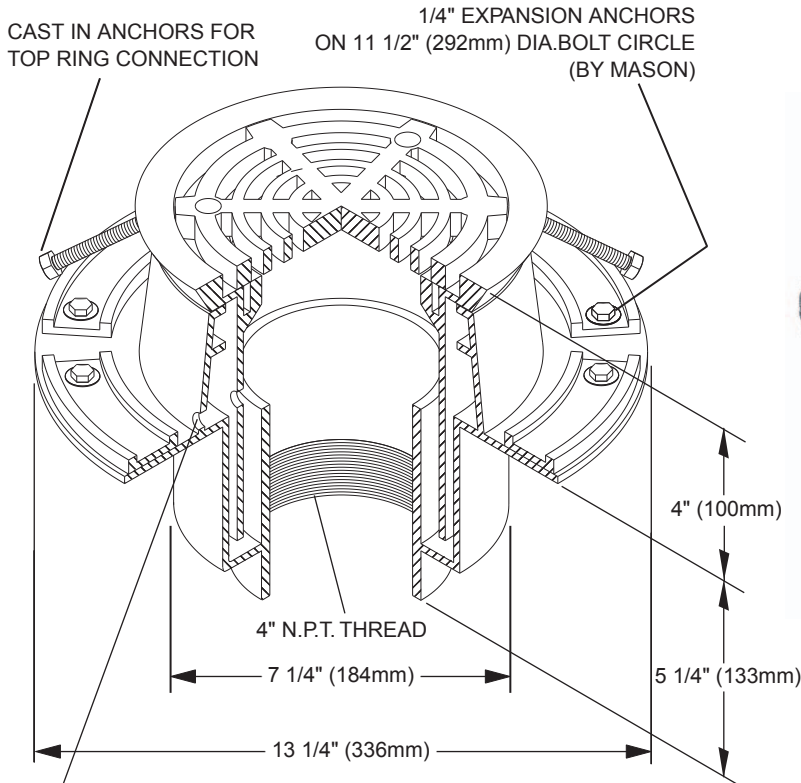
# MASON INDUSTRIES, Inc.

Manufacturers of Vibration Control Products  
 350 Rabro Drive 2101 W. Crescent Ave., Suite D  
 Hauppauge, NY 11788 Anaheim, CA 92801  
 631/348-0282 714/535-2727  
 FAX 631/348-0279 FAX 714/535-5738  
 Info@Mason-Ind.com Info@MasonAnaheim.com  
 www.Mason-Ind.com

JOB NAME \_\_\_\_\_  
 CUSTOMER \_\_\_\_\_  
 CUSTOMER P.O. \_\_\_\_\_  
 MASON M.I. \_\_\_\_\_  
 DWG. NO. \_\_\_\_\_

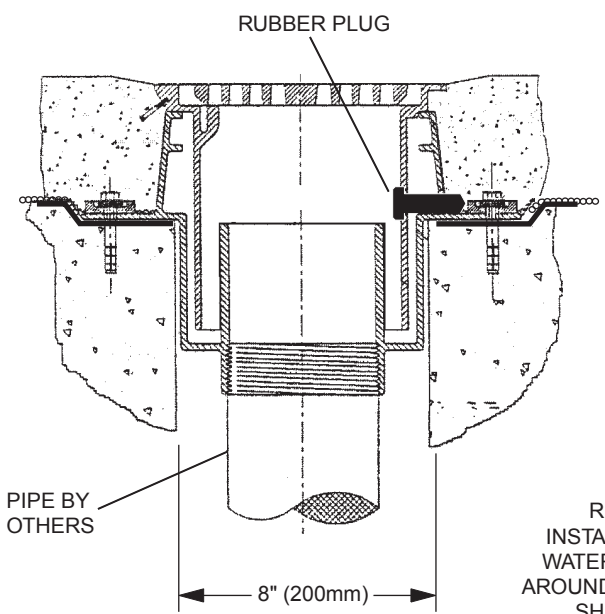
# CFD

Cast Floor Drain  
 For Concrete  
 Floating Floors

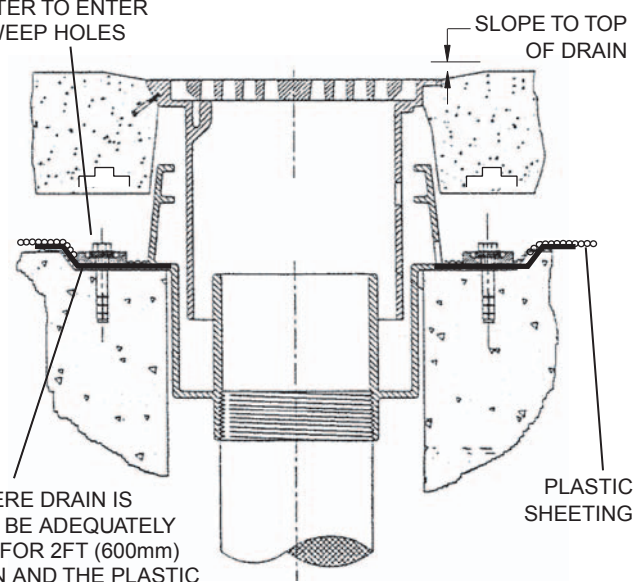


WEEP HOLE RUBBER PLUGS MUST BE REMOVED BEFORE RAISING FLOOR (RUBBER PLUG SHOWN ON VIEW BELOW)

5/8" (16mm) RECESS IN STRUCTURAL SLAB TO ALLOW WATER TO ENTER WEEP HOLES



**INSTALLED DRAIN BEFORE RAISING**



RECESS WHERE DRAIN IS INSTALLED MUST BE ADEQUATELY WATERPROOFED FOR 2FT (600mm) AROUND THE DRAIN AND THE PLASTIC SHEETING (BOND BREAKER) MUST BE TAPED TO THE DRAIN BASE PLATE UNDER CLAMPING RING

**INSTALLED DRAIN AFTER RAISING**