



# MASON INDUSTRIES, Inc.

Manufacturers of Vibration Control Products

350 Rabro Drive  
Hauppauge, NY 11788  
631/348-0282  
FAX 631/348-0279

2101 W. Crescent Ave., Suite D  
Anaheim, CA 92801  
714/535-2727  
FAX 714/535-5738

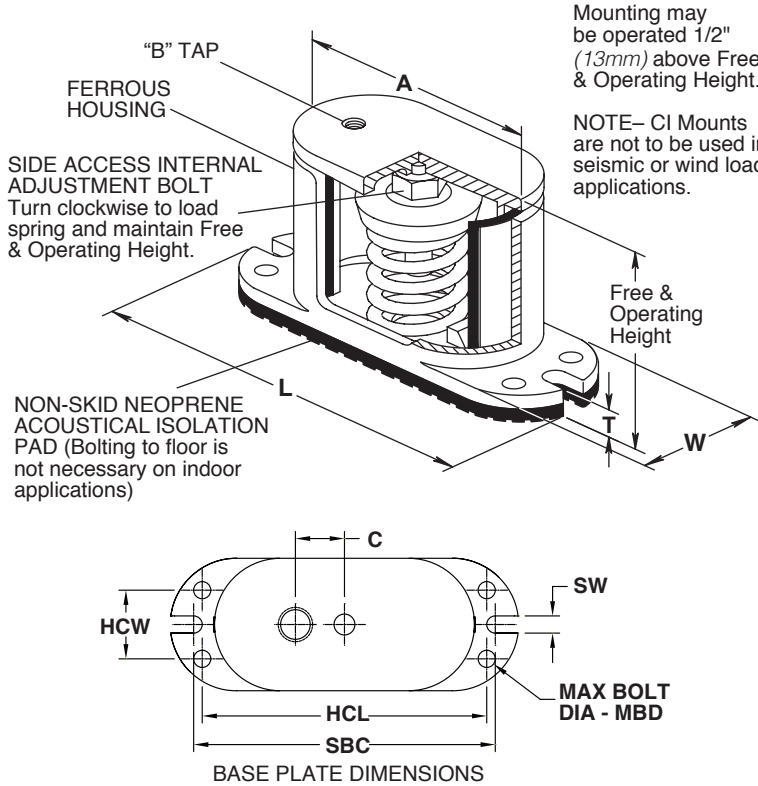
Info@Mason-Ind.com • www.Mason-Ind.com

JOB NAME \_\_\_\_\_  
 CUSTOMER \_\_\_\_\_  
 CUSTOMER P.O. \_\_\_\_\_  
 MASON M. \_\_\_\_\_  
 DWG No. \_\_\_\_\_

# CI

2" (51mm) Deflection  
B, B2, C2, D-C2 &  
E-C2 Spring Mounts

Illustration shows single spring CI-A, CI-B or CI-C mount.  
CI-D & CI-E mounts have 2 & 4 springs each respectively.



### TYPE CI RATINGS

Type & Size	Rated Capacity (lbs) (kg)		Rated Defl. <sup>†</sup> (in) (mm)		Spring Constant (lbs/in) (kg/mm)		Spring Color/Stripe
CI-B-20	20	9	2.40	61	8	4	Tan
CI-B-26	26	12	2.18	55	12	5	White/Blue
CI-B-35	35	16	2.20	56	16	7	Purple
CI-B-50	50	23	2.20	56	24	11	White/Red
CI-B-65	65	29	2.10	53	31	14	Brown
CI-B-85	85	39	2.10	53	40	18	White/Black
CI-B-115	115	52	2.00	51	57	26	Silver
CI-B-150	150	68	2.00	51	75	34	Orange
CI-B2-210	210	95	2.12	54	99	45	Silver
CI-B2-290	290	132	2.00	51	144	65	Blue
CI-B2-450 <sup>‡</sup>	450	204	2.00	51	224	102	Tan
CI-B2-680 <sup>‡</sup>	680	308	2.00	51	340	154	Gray
CI-C2-125	125	57	2.50	64	50	23	Purple
CI-C2-170	170	77	2.40	61	70	32	Brown
CI-C2-210	210	95	2.30	58	90	41	Red
CI-C2-260	260	118	2.20	56	120	55	White
CI-C2-330	330	150	2.00	51	165	75	Black
CI-C2-460	460	209	2.00	51	230	104	Blue
CI-C2-610	610	277	2.00	51	305	138	Green
CI-C2-880 <sup>‡</sup>	880	399	2.00	51	440	200	Gray
CI-C2-1210 <sup>‡</sup>	1210	549	2.00	51	605	274	Silver
CI-C2-1540 <sup>‡</sup>	1540	698	2.00	51	770	349	Gray*
CI-C2-1870 <sup>‡</sup>	1870	848	2.00	51	935	424	Silver*
CI-D-C2-2420 <sup>‡</sup>	2420	1098	2.00	51	1210	549	Silver
CI-D-C2-3080 <sup>‡</sup>	3080	1397	2.00	51	1540	699	Gray*
CI-D-C2-3740 <sup>‡</sup>	3740	1696	2.00	51	1870	848	Silver*
CI-E-C2-3520 <sup>‡</sup>	3520	1597	2.00	51	1260	572	Gray
CI-E-C2-4840 <sup>‡</sup>	4840	2195	2.00	51	2420	1098	Silver
CI-E-C2-6160 <sup>‡</sup>	6160	2794	2.00	51	3080	1397	Gray*
CI-E-C2-7480 <sup>‡</sup>	7480	3393	2.00	51	3740	1696	Silver*

All springs without "‡" have additional travel to solid equal to 50% of the rated deflection.  
\*with RED core spring

Published ratings allow minimum 25% additional travel to solid. For a full 50% specified minimum use the following ratings:

Size	Derated Capacity (lbs) (kg)		Defl (in) (mm)
B2-450	410	186	1.83 46
B2-680	565	256	1.66 42
C2-880	800	363	1.82 46
C2-1210	1010	458	1.67 42
C2-1540	1285	583	1.67 42
C2-1870	1560	708	1.67 42
D-C2-2420	2020	916	1.67 42
D-C2-3080	2570	1166	1.67 42
D-C2-3740	3120	1415	1.67 42
E-C2-3520	3200	1451	1.82 46
E-C2-4840	4040	1833	1.67 42
E-C2-6160	5145	2334	1.67 42
E-C2-7480	6245	2833	1.67 42

### TYPE CI DIMENSIONS (in/mm)<sup>†</sup>

Type & Size	A	B	C	L	T	W	SW	HCL	HCW	MBD	SBC	Free & Operating Height
CI-B & B2	53/4	1/2-13UNC	11/4	81/4	1/2	23/4	7/16	61/2	11/2	3/8	71/4	61/8
	146		32	210	13	70	11	165	38	10	184	156
CI-C2	65/8	1/2-13UNC	11/4	87/8	9/16	31/2	7/16	71/4	13/4	3/8	77/8	63/4
	168		32	225	14	89	11	184	44	10	200	171
CI-D-C2	93/4	5/8-11UNC	††	12	9/16	31/2	7/16	103/8	13/4	3/8	11	71/2
	1248		305	14	89	11	264	44	10	279	191	
CI-E-C2	121/8	5/8-11UNC	2	123/4	5/8	65/8	—	113/8	51/8	1/2	—	71/2
	308		50	324	16	168	—	289	130	13	—	191

<sup>†</sup> Casting Dimensions vary ±1/8" (3mm). <sup>††</sup>Hole is in center.

### PLAN VIEW OF MOUNT LOCATIONS

TAG: \_\_\_\_\_  
 UNIT: \_\_\_\_\_



### SPECIFIED DEFLECTION

1:	6:
2:	7:
3:	8:
4:	9:
5:	10:
Sets Required:	