



MASON INDUSTRIES, Inc.

Manufacturers of Vibration Control Products

350 Rabro Drive 2101 W. Crescent Ave., Suite D
 Hauppauge, NY 11788 Anaheim, CA 92801
 631/348-0282 714/535-2727
 FAX 631/348-0279 FAX 714/535-5738
 Info@Mason-Ind.com • www.Mason-Ind.com

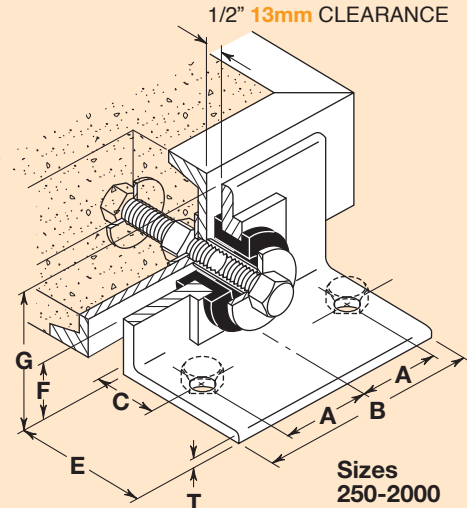
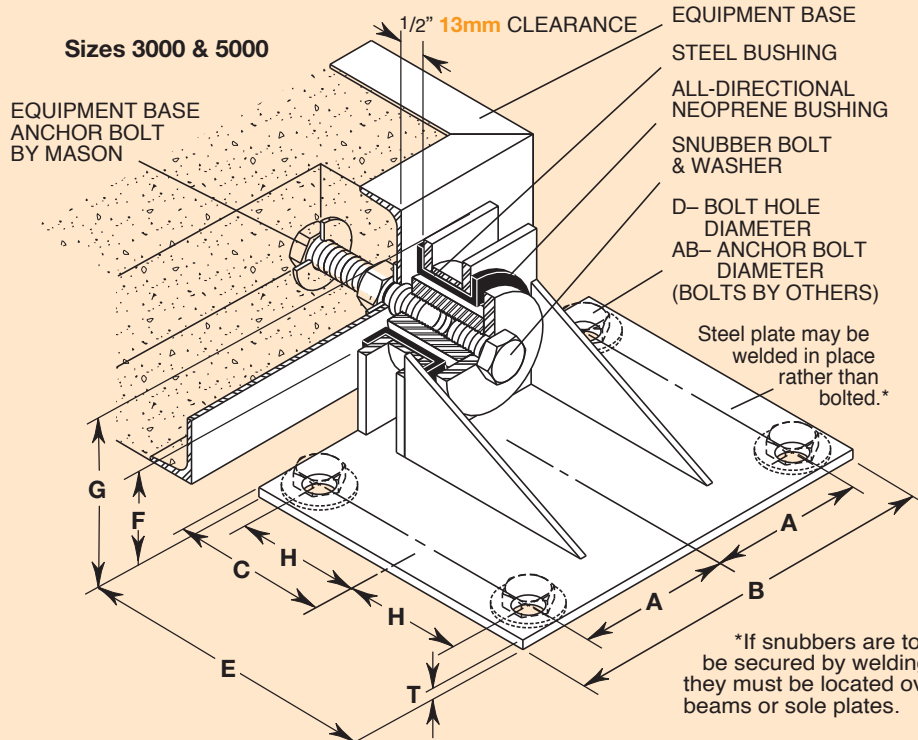
ALL-DIRECTIONAL SEISMIC SNUBBER WITH CALIFORNIA OSHPD No. OPA-196

TYPE

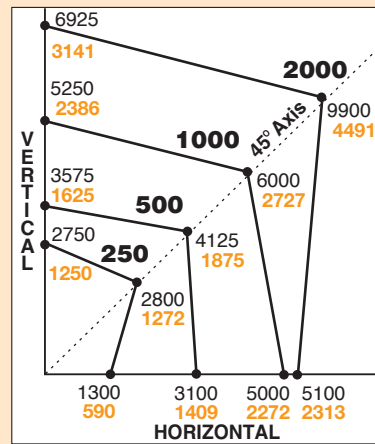
Z-1225

DATA SHEET DS-300B-2.2

Z-1225 ALL-DIRECTIONAL SEISMIC SNUBBER Sizes 250 - 5000



OSHPD OPA-0196 Rated Load Curves- lbs kgs



NOTES:

- Neoprene Bushings are 1/4" 6mm thick throughout.
- All Operating Clearances are 1/4" 6mm.
- Set Base Anchor to protrude 3/4" 19mm from face to face.
- A continuous rod, threaded on each end and protruding 3/4" 19mm from both the faces of the base may be used to secure the threaded steel bushings in lieu of the individual Base Anchor Bolts.
- Normal clearance between base & floor is 1" 25mm.
- Distance from Base Anchor Bolt centerline to bottom of base is F minus 1" 25mm.
- When 2" 51mm clearance between base and floor is specified, use 1" 25mm spacer plate under snubber angle.

8. Earthquake restraining angles are to be installed after equipment is in operation to assure design clearances are maintained as follows:

- Remove snubber bolt and washer.
- Screw steel bushing on Base Anchor Bolt protrusion.
- Pass Restraining Angle over steel bushing so it is centered horizontally.
- Raise or lower base with spring adjustments or shim Restraining Angle so steel bushing is centered vertically.
- Set Restraining Angle so inside vertical face is 1/2" 13mm clear of base and parallel to it.
- Mark and set AB anchor bolts or weld angle in position.
- Replace snubber bolt and washer and tighten in position.

Horizontal, Vertical and 45° plotted Ratings are California OSHPD submitted values having the OSHPD Anchorage Preapproval Number OPA-0196. Testing and calculations were performed to meet OSHPD criteria.

To use OSHPD submitted rated load curves: 1) Calculate Vertical and Horizontal Forces on mounting including translations and overturning moments. 2) Plot Horizontal Load vs Vertical Load. The point must fall within the area below the OSHPD curve.

TYPE Z-1225 1G ALL DIRECTIONAL LOAD RATINGS AND DIMENSIONS

| Type | Size | 1G All Directional Load Ratings | Equipment Base Anchor Bolt Size & Length | | | | | | | | | | |
|----------------------------------|----------|---------------------------------|--|-----|-----|-------|-----|-----|-------|------|------|-------------|----------------|
| | | | A | AB | B | C | D | E | F | G | H | T | |
| U.S.A. or British (lbs & inches) | 250 | 250 lbs | 2 | 1/2 | 5 | 11/2 | 5/8 | 3 | 21/8 | 31/2 | — | 1/4 | 1/2"-13 UNC-4" |
| | 500 | 500 lbs | 23/4 | 1/2 | 7 | 2 | 5/8 | 4 | 23/8 | 4 | — | 1/4 | 5/8"-11 UNC-6" |
| | 1000 | 1000 lbs | 3 | 5/8 | 8 | 2 1/2 | 3/4 | 5 | 2 1/2 | 5 | — | 3/8 | 3/4"-10 UNC-6" |
| | 2000 | 2000 lbs | 5 | 3/4 | 12 | 3 | 7/8 | 6 | 3 | 6 | — | 1/2 | 3/4"-10 UNC-6" |
| | 3000 | 3000 lbs | 43/4 | 3/4 | 12 | 5 | 7/8 | 10 | 31/4 | 63/8 | 33/4 | 3/8 | 7/8"-9 UNC-6" |
| Metric (kgs & mm) | 250 | 113 kgs | 51 | 13 | 127 | 38 | 16 | 76 | 54 | 89 | — | 6 | 1/2"-13 UNC-4" |
| | 500 | 227 kgs | 70 | 13 | 178 | 51 | 16 | 102 | 60 | 102 | — | 6 | 5/8"-11 UNC-6" |
| | 1000 | 455 kgs | 76 | 16 | 203 | 64 | 19 | 127 | 64 | 127 | — | 10 | 3/4"-10 UNC-6" |
| | 2000 | 909 kgs | 127 | 19 | 305 | 76 | 22 | 152 | 76 | 152 | — | 13 | 3/4"-10 UNC-6" |
| | 3000 | 1364 kgs | 121 | 19 | 305 | 127 | 22 | 254 | 83 | 162 | 95 | 10 | 7/8"-9 UNC-6" |
| 5000 | 2273 kgs | 152 | 25 | 381 | 152 | 29 | 305 | 89 | 162 | 121 | 10 | 1"-8 UNC-6" | |