



MASON INDUSTRIES, Inc.

Manufacturers of Vibration Control Products

350 Rabro Drive
Hauppauge, NY 11788
631/348-0282
FAX 631/348-0279

2101 W. Crescent Ave., Suite D
Anaheim, CA 92801
714/535-2727
FAX 714/535-5738

Info@Mason-Ind.com • www.Mason-Ind.com

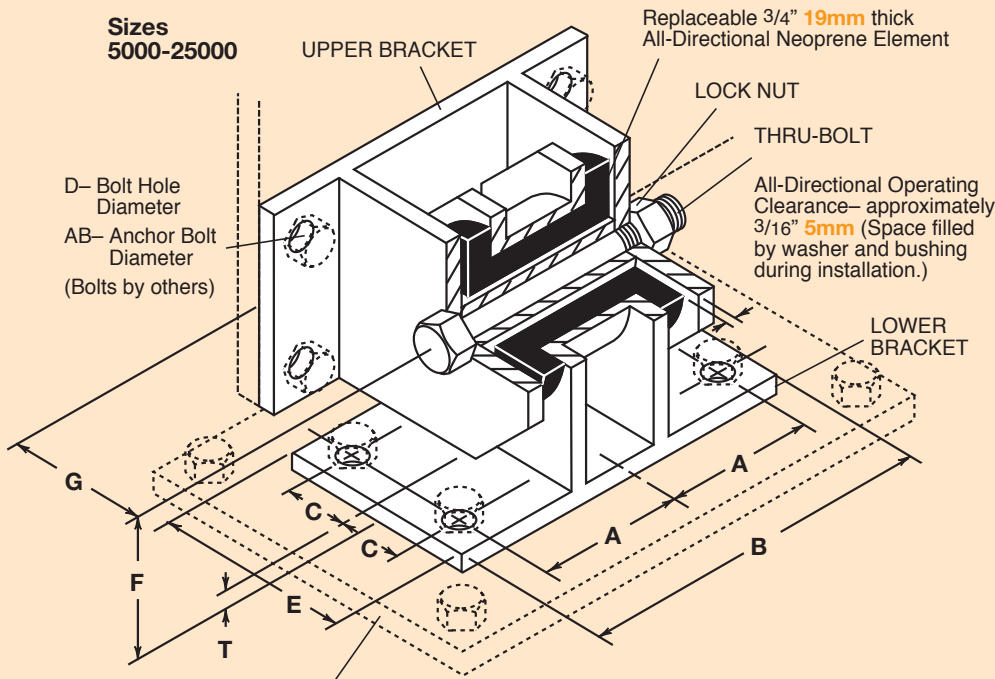
**ALL-DIRECTIONAL
SEISMIC SNUBBER
with CALIFORNIA
OSHPD No. OPA-0197**

TYPE

Z-1011

DATA SHEET DS-300A-2.2

Z-1011 ALL-DIRECTIONAL SEISMIC SNUBBER Sizes 500 - 25000

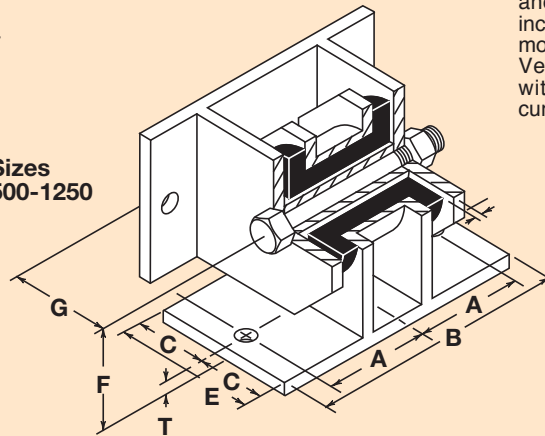


When Steel Sole Plates are used, level and anchor Sole Plates properly to concrete. Snubber Baseplate may be bolted or welded to Sole Plate.

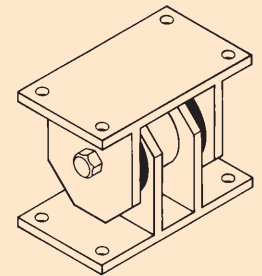
INSTALLATION INSTRUCTIONS:

- Snubbers are inactive during normal operation and clearance must be maintained.
- To maintain clearances around isolation bushing, unit is furnished with spacer washers and a spacer bushing, these to remain in unit during installation only.
- If snubbers are installed on equipment such as blowers or pumps with flexible connections that move and remain in a different position during operation, final positioning and adjustment of snubbers must be made with equipment in operation.
- Use shims at brackets as required so that units are installed without applying pressure on spacer washers or bushing.
- After units are installed, remove spacer washers and bushing as follows:
 - Remove lock nut from thru-bolt and remove thru-bolt.
 - Remove anchor bolts from one bracket. If bracket was shimmed, note shim position.
 - Remove bracket and remove spacer washers and spacer bushing.
 - Reinstall bracket and thru-bolt. Shim as before if shims were used.
 - Lock thru-bolt in place with jam nut.

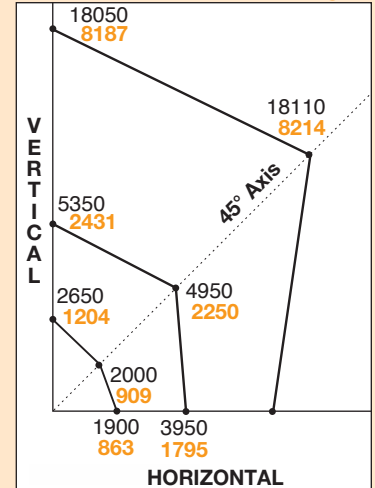
Sizes
500-1250



ALTERNATE
180° POSITION



OSHPD OPA-0197 Rated Load Curves— lbs kgs



Horizontal, Vertical and 45° plotted Ratings are California OSHPD submitted values having the OSHPD Anchorage Preapproval Number OPA-0197. Testing and calculations were performed to meet OSHPD criteria.

To use OSHPD submitted rated load curves: 1) Calculate Vertical and Horizontal Forces on mounting including translations and overturning moments. 2) Plot Horizontal Load vs Vertical Load. The point must fall within the area below the OSHPD curve.

TYPE Z-1011 1G ALL DIRECTIONAL LOAD RATINGS AND DIMENSIONS

Type	Size	1G All Directional Load Ratings	A	AB	B	C	D	E	F	G	T
U.S.A. or British (lbs & inches)	500	500 lbs.	31/8	3/8	71/2	11/2	1/2	3	21/2	3	1/4
	1250	1250 lbs.	33/8	1/2	81/4	3	5/8	6	43/8	43/8	3/8
Metric (kgs & mm)	5000	5000 lbs.	5	5/8	121/2	21/2	3/4	7	5	5	1/2
	13000	13000 lbs.	6	1	141/2	23/4	11/8	8	53/4	53/4	3/4
U.S.A. or British (lbs & inches)	25000	25000 lbs.	63/8	11/4	16	41/8	13/8	11	8	8	1
	500	227 kgs.	79	10	191	38	13	76	64	76	6
Metric (kgs & mm)	1250	568 kgs.	86	13	210	76	16	152	111	111	10
	5000	2273 kgs.	127	16	318	64	19	178	127	127	13
Metric (kgs & mm)	13000	5909 kgs.	152	25	368	70	29	203	146	146	19
	25000	11364 kgs.	162	32	406	105	35	279	203	203	25