



MASON INDUSTRIES, Inc.

MERCER RUBBER Co.

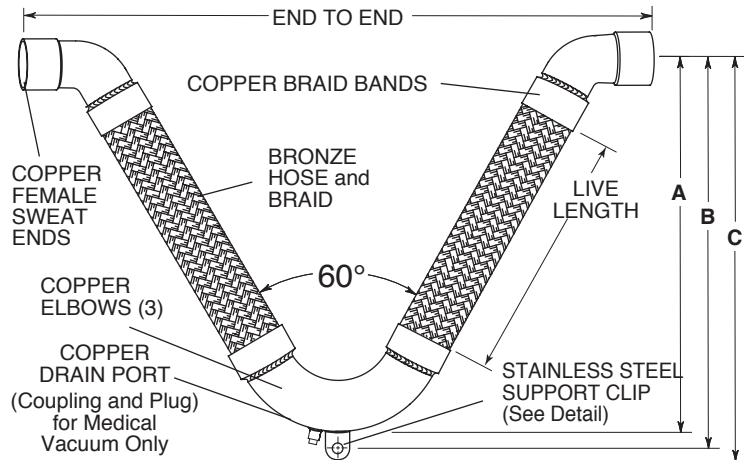
350 Rabro Drive, Hauppauge, NY 11788
Mason- 631/348-0282 • Info@Mason-Ind.com
Mercer- 631/582-1524 • Info@Mercer-Rubber.com
FAX 631/348-0279



JOB NAME _____
CUSTOMER _____
CUSTOMER P.O. _____
MASON M. _____
DWG No. _____

VCPSBMG

**MEDICAL GAS RATED
BRONZE BRAIDED
60° VEE HOSE with
COPPER FEMALE
SWEAT ENDS**



Pipe Size	Plug Size
1/2" - 1"	None
1 1/4" - 1 1/2"	1/4"
2" - 3"	1/2"

Drain Plugs are often removed to allow attachment of drain hose for blow down or drainage.

NOTE: VCPSBMG hoses are cleaned and bagged for medical gas applications per CGA G-4.1. Manufactured in accordance with NFPA99 Requirements.



STAINLESS STEEL SUPPORT CLIP

Pipe Size (in) (mm)	Hole Diameter (in) (mm)	Thickness (in) (mm)
1/2 13	1/2 13	1/8 3
3/4 20	1/2 13	1/8 3
1 25	1/2 13	1/8 3
1 1/4 32	1/2 13	1/8 3
1 1/2 40	1/2 13	1/8 3
2 50	5/8 16	1/8 3
2 1/2 65	5/8 16	1/8 3
3 80	3/4 19	1/8 3

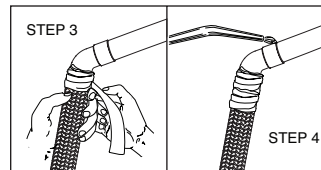
RATED PRESSURES @ ELEVATED TEMPERATURES (psi) (kg/cm²)

Hose Size (in) (mm)	150°F 66°C Factor 0.92	300°F 149°C Factor 0.83	400°F 204°C Factor 0.78
1/2 15	460 32	415 29	390 27
3/4 20	432 30	390 27	367 25
1 25	414 29	373 26	351 24
1 1/4 32	368 25	332 23	312 22
1 1/2 40	308 21	278 19	261 18
2 50	460 32	415 29	390 27
2 1/2 65	400 28	361 25	339 24
3 80	296 21	267 19	251 18

When using these products in stainless steel water systems, dielectric unions must be used on each end to prevent leakage from galvanic action.

INSTALLATION:

1. Thoroughly clean male and female ends using steel wool and steel brushes.
2. Nitrogen purge- flux not permitted.
3. Wrap base of copper fitting on connector and 2" (50mm) of the braid with a wet cloth to prevent overheating during soldering.
4. Direct the torch away from the base of the copper fitting and braided section. Avoid contact of the flame with the base of the copper fitting and braid. Heat end of copper fitting for proper flow of braze.
5. Use caution with brazing rod or other higher temperature techniques. Overheating will cause leaks.
6. Remove wet cloth immediately after installation.



RATED MOVEMENTS

±4" (100mm) All Directional Seismic Movement
±6" (150mm) Guided Thermal Movement Only

**Vacuum rating varies with size and application.
Consult factory on all vacuum applications.**

VCPSBMG DIMENSIONS AND PRESSURE RATINGS (American Units)

Tubing Size & End to End (in)	Live Length (in)	Corrugations per foot	A (in)	B (in)	C (in)	Rated Pressure @ 70°F (psi)
1/2 x 21 1/2	14	73	15	15 3/4	16 1/4	500
3/4 x 21 5/8	15	67	15 3/4	16 1/2	17	470
1 x 24 3/8	16	58	17	17 3/4	18 1/4	450
1 1/4 x 26 3/4	17	55	18 3/8	19 1/8	19 5/8	400
1 1/2 x 30 1/8	19	53	20 5/8	21 3/8	21 7/8	335
2 x 34 3/8	20	51	22 1/2	23 1/2	24 1/4	500
2 1/2 x 40	22	34	25 7/8	26 7/8	27 5/8	435
3 x 45	24	30	28 5/8	29 7/8	30 7/8	322

VCPSBMG DIMENSIONS AND PRESSURE RATINGS (Metric Units)

Tubing Size & End to End (mm)	Live Length (mm)	Corrugations per meter	A (mm)	B (mm)	C (mm)	Rated Pressure @ 21°C (kg/cm²)
15 x 546	356	240	381	400	413	35
20 x 549	381	220	400	419	432	32
25 x 594	406	190	432	451	464	31
32 x 679	432	180	467	486	498	28
40 x 765	483	174	524	543	556	23
50 x 873	508	167	572	597	616	35
65 x 1016	559	112	657	683	702	31
80 x 1143	610	98	727	759	784	23

Female end fits over copper tubing, e.g. 1/2 x 21 1/2 (15 x 546mm) fits over 1/2" (15mm) tubing.

End to End Tolerance: minus 1% plus 3%. Minimum Burst is four times the Rated Pressure. Safety factor of 4.

Sizes 2" to 3" are double braided. Assembly is able to withstand intermittent temperature of 1000°F (538°C).

QTY	SIZE	TAG

QTY	SIZE	TAG

Certification Form S-548 01/2020

DWN

CHKD

DATE

DWG No.