



MASON INDUSTRIES, Inc.

MERCER RUBBER Co.

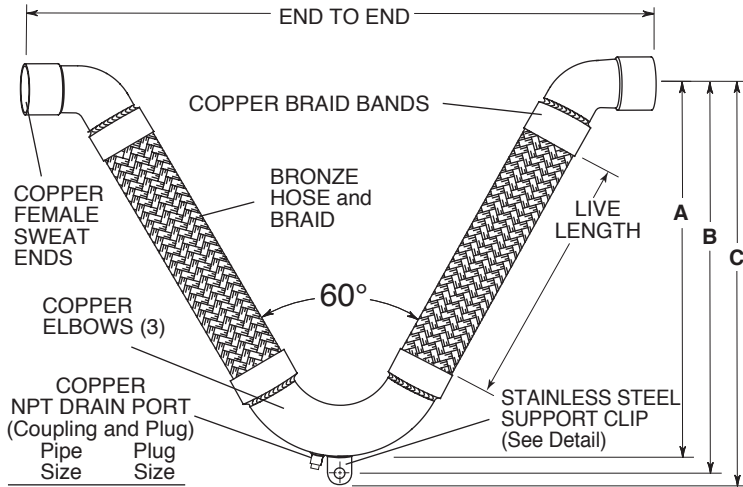
350 Rabro Drive, Hauppauge, NY 11788
Mason- 631/348-0282 • Info@Mason-Ind.com
Mercer- 631/582-1524 • Info@Mercer-Rubber.com
FAX 631/348-0279



JOB NAME
CUSTOMER
CUSTOMER P.O.
MASON M.
DWG No.

VCPSB

BRONZE BRAIDED
60Vee HOSE with
COPPER FEMALE
SWEAT ENDS



WARNING! If disinfecting (chlorinating) is required per the International Plumbing Code, AWWA C651, and AWWA C652, then tablets and granular chlorine (calcium hypochlorite), and chlorine for swimming pool disinfection CANNOT be used on our products.

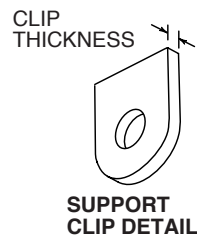
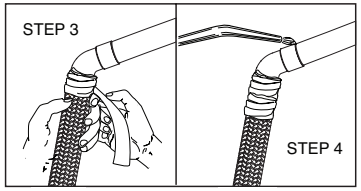


Table with 3 columns: Pipe Size (in/mm), Support Clip Hole Diameter (in/mm), Support Clip Thickness (in/mm). Rows include sizes from 1/2 to 4 inches.

INSTALLATION:

- 1. Thoroughly clean male and female ends using steel wool and steel brushes.
2. Apply flux.
3. Wrap base of copper fitting on connector and 2" (50mm) of the braid with a wet cloth to prevent overheating during soldering.
4. Direct the torch away from the base of the copper fitting and braided section. Avoid contact of the flame with the base of the copper fitting and braid.
5. Use caution with brazing rod or other higher temperature techniques. Overheating will cause leaks.
6. Remove wet cloth and remove all soldering flux immediately after installation. Flux chlorides will cause premature failure of joint.



RATED PRESSURES @ ELEVATED TEMPERATURES (psi) (kg/cm²)

Table with 4 columns: Hose Size (in/mm), 150°F (66°C), 300°F (149°C), 400°F (204°C). Rows include sizes from 1/2 to 4 inches.

When using these products in stainless steel water systems, dielectric unions must be used on each end to prevent leakage from galvanic action.

RATED MOVEMENTS

±4" (100mm) All Directional Seismic Movement
±6" (150mm) Guided Thermal Movement Only

Vacuum rating varies with size and application. Consult factory on all vacuum applications.

VCPSB DIMENSIONS AND PRESSURE RATINGS (American Units)

Table with 8 columns: Type, Tubing Size & End to End (in), Live Length (in), Corrugations per foot, A (in), B (in), C (in), Rated Pressure @70°F (psi). Rows include sizes from 1/2 to 4 inches.

VCPSB DIMENSIONS AND PRESSURE RATINGS (Metric Units)

Table with 8 columns: Type, Tubing Size & End to End (mm), Live Length (mm), Corrugations per meter, A (mm), B (mm), C (mm), Rated Pressure @21°C (kg/cm²). Rows include sizes from 15 to 100 mm.

End to End Tolerance: minus 1% plus 3%. Minimum Burst is four times the Rated Pressure. Safety factor of 4.
Female end fits over copper tubing, e.g. 1/2 x 21 1/2" (15 x 546mm) fits over 1/2" (15mm) tubing.

Table with 3 columns: QTY, SIZE, TAG. Empty rows for order entry.

Table with 3 columns: QTY, SIZE, TAG. Empty rows for order entry.