



MASON INDUSTRIES, Inc.

Manufacturers of Vibration Control Products

350 Rabro Drive
Hauppauge, NY 11788
631/348-0282
FAX 631/348-0279

2101 W. Crescent Ave., Suite D
Anaheim, CA 92801
714/535-2727
FAX 714/535-5738

Info@Mason-Ind.com • www.Mason-Ind.com

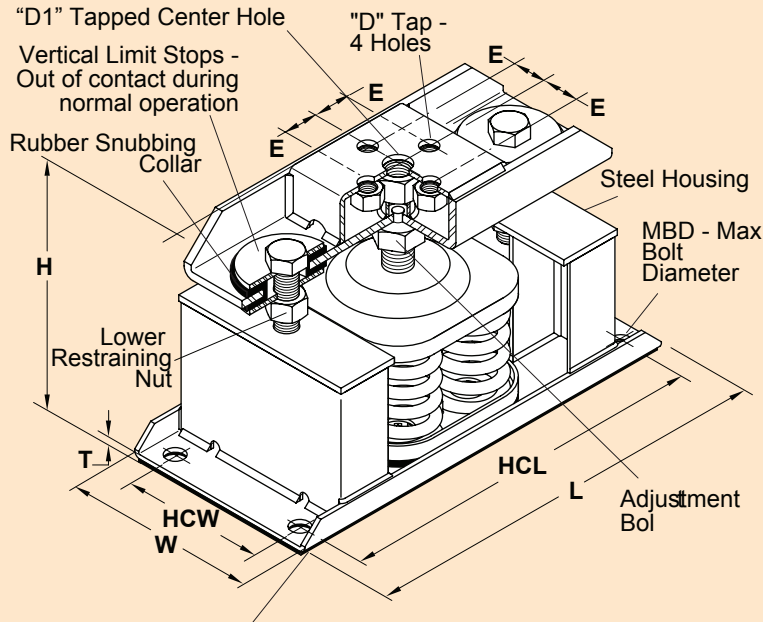
25mm and 50mm DEFLECTION B, 1, 2 & 4 SERIES SPRING MOUNTS

SLRC

DATA SHEET DS-225C

SLRC

25mm Deflection B, 1, 2 & 4 Springs



Non-Skid pad is used in Non-Seismic zones only. Remove pad prior to installing in seismic zones. Reduce published height by 3mm if pad is removed. Baseplate must be uniformly supported.

TYPE SLRC RATINGS

Size	Rated Capacity (kg)	Rated Defl. (mm)	Spring Constant (kg/mm)	Spring Color/Stripe
SLRC-B-65	29	53	0.55	Brown
SLRC-B-85	39	53	0.74	Wht/Blk
SLRC-B-115	52	51	1.02	Silver
SLRC-B-150	68	51	1.33	Orange
SLRC-B-280	127	41	3.10	Green
SLRC-B-450	204	33	6.18	Red
SLRC-B-750	341	28	12.1	White
SLRC-B-1000	454	25	18.2	Blue
SLRC-1-1000	454	25	18.2	Black
SLRC-1-1350	613	25	24.5	Yellow
SLRC-1-1750	795	25	31.8	Black*
SLRC-1-2100	953	25	38.1	Yellow*
SLRC-1-2385	1082	25	43.3	Yellow**
SLRC-1-2650	1202	25	48.1	Red*
SLRC-1-2935	1332	25	53.2	Red**
SLRC-2-3500	1588	25	63.5	Black*
SLRC-2-4200	1906	25	76.2	Yellow*
SLRC-2-4770	2164	25	86.6	Yellow**
SLRC-4-5400	2450	25	98.0	Yellow
SLRC-4-7000	3176	25	127.0	Black*
SLRC-4-8400	3811	25	152.4	Yellow*
SLRC-4-9540	4328	25	173.1	Yellow**
SLRC-4-10600	4808	25	192.3	Red*
SLRC-4-11740	5327	25	213.0	Red**

* with RED inner Spring

** with GREEN inner spring

D1- Center Hole used where equipment or base provides for 1 Hole Bolting.

D - Holes are provided for bolting under beam flanges. Use 2 holes wherever possible

Illustration shows SLRC-4-housing which contains four (4) C springs. Not shown are SLRC-B housing which contains one (1) B spring, SLRC-1 housing which contains one (1) C spring and SLRC-2 housing which contains two (2) C springs.

All springs have an additional travel to solid equal to 50% of the rated deflection.

TYPE SLRC DIMENSIONS (mm)

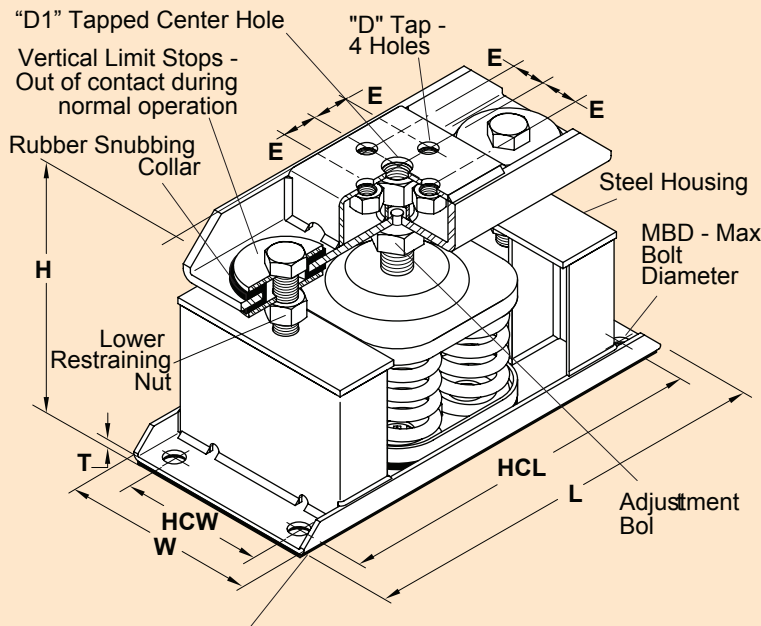
Size	L	W	H	T	MBD	HCW	HCL	D	D1	E
SLRC-B,1	300	100	235	6	12	50	260	M12x1.75	M16x2	25
SLRC-2	380	110	235	7	16	50	340	M16x2	M20x2.5	30
SLRC-4	400	190	235	7	16	140	360	M16x2	M24x3	35

SPRING DATA

Size	Spring OD (mm)	Free Height (mm)	Ratio K_x/K_y	Ratio OD/OH
B	60	102	0.70-0.90	0.79-1.25
C	73	105	0.90-1.10	0.92

SLRC

51mm Deflection B2, C2, 2-C2 & 4-C2



Non-Skid pad is used in Non-Seismic zones only. Remove pad prior to installing in seismic zones. Reduce published height by 3mm if pad is removed. Baseplate must be uniformly supported.

D1- Center Hole used where equipment or base provides for 1 Hole Bolting.

D - Holes are provided for bolting under beam flanges. Use 2 holes wherever possible

Illustration shows SLRC-4-C2 housing which contains four (4) C2 springs. Not shown are SLRC-B2 housing which contains one (1) B2 spring, SLRC-C2 housing which contains one (1) C2 spring and SLRC-2-C2 housing which contains two (2) C2 springs.

TYPE SLRC RATINGS

Size	Rated Capacity (kg)	Rated Defl. (mm)	Spring Constant (kg/mm)	Spring Color/Stripe
SLRC-B-20	9	61	0.15	Tan
SLRC-B-26	12	55	0.21	Wht/Blue
SLRC-B-35	16	56	0.28	Purple
SLRC-B-50	23	56	0.41	Wht/Red
SLRC-B-65	29	53	0.56	Brown
SLRC-B-85	39	53	0.73	Wht/Blk
SLRC-B-115	52	51	1.02	Silver
SLRC-B-150	68	51	1.33	Orange
SLRC-B2-210	95	54	1.76	Silver
SLRC-B2-290	132	51	2.58	Blue
SLRC-B2-450 [#]	204	51	4.00	Tan
SLRC-B2-680 [#]	308	51	6.05	Gray
SLRC-C2-125	57	64	0.89	Purple
SLRC-C2-170	77	61	1.26	Brown
SLRC-C2-210	95	58	1.64	Red
SLRC-C2-260	118	56	2.11	White
SLRC-C2-330	150	51	2.94	Black
SLRC-C2-460	209	51	4.09	Blue
SLRC-C2-610	277	51	5.43	Green
SLRC-C2-880 [#]	399	51	7.83	Gray
SLRC-C2-1210 [#]	549	51	10.8	Silver
SLRC-C2-1540 [#]	699	51	13.7	Gray*
SLRC-C2-1870 [#]	848	51	16.6	Silver*
SLRC-2-C2-340	154	61	2.53	Brown
SLRC-2-C2-420	191	58	3.29	red
SLRC-2-C2-520	236	56	4.21	White
SLRC-2-C2-660	299	51	5.87	Black
SLRC-2-C2-920	417	51	8.18	Blue
SLRC-2-C2-1220	554	51	10.9	Green
SLRC-2-C2-1760 [#]	799	51	15.7	Gray
SLRC-2-C2-2420 [#]	1098	51	21.5	Silver
SLRC-2-C2-3080 [#]	1397	51	27.4	Gray*
SLRC-2-C2-3740 [#]	1697	51	33.3	Silver*
SLRC-4-C2-2440 [#]	1107	51	21.7	Green
SLRC-4-C2-3520 [#]	1597	51	31.3	Gray
SLRC-4-C2-4840 [#]	2196	51	43.1	Silver
SLRC-4-C2-6160 [#]	2795	51	54.8	Gray*
SLRC-4-C2-7480 [#]	3394	51	66.5	Silver*

* with RED inner Spring

50% Travel to Solid					
SLRC Size	Derated Capacity (kg)	Defl. (mm)	SLRC Size	Derated Capacity (kg)	Defl. (mm)
B2-450	186	46	2-C2-2420	916	42
B2-680	256	42	2-C2-3080	1166	42
C2-880	363	46	2-C2-3740	1416	42
C2-1210	458	42	4-C2-3520	1456	46
C2-1540	583	42	4-C2-4840	1833	42
C2-1870	708	42	4-C2-6160	2333	42
2-C2-1760	726	46	4-C2-7480	2833	42

[#]Published ratings allow minimum 25% additional travel to solid. For 50% minimum specified use the ratings shown above. All springs without "[#]" have additional travel to solid equal to 50% of the rated deflection.

TYPE SLRC DIMENSIONS (mm)

Size	L	W	H	T	MBD	HCW	HCL	D	D1	E
SLRC-B2,C2	300	100	260	6	12	50	260	M12x1.75	M16x2	25
SLRC-2-C2	400	110	260	7	16	50	360	M16x2	M20x2.5	30
SLRC-4-C2	400	190	260	7	16	140	360	M16x2	M24x3	35

SPRING DATA

Size	Spring OD (mm)	Free Ht. (mm)	Ratio Kx/Ky	Ratio OD/OH
B	60	102	0.70-0.90	1.19-1.48
B2	60	114	0.55-0.60	0.95-1.00
C2	73	127	0.63-0.85	0.96-1.15